

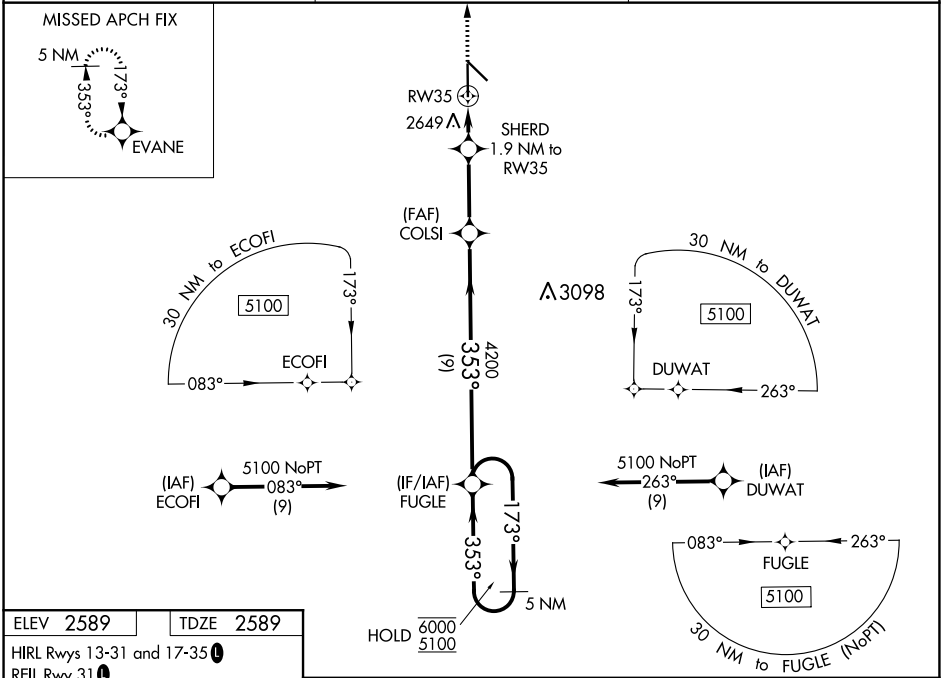
WAAS CH <b>81917</b> <b>W35A</b>	APP CRS <b>353°</b>	Rwy Idg TDZE Apt Elev	<b>6824</b> <b>2589</b> <b>2589</b>
--	------------------------	-----------------------------	---

# RNAV (GPS) RWY 35

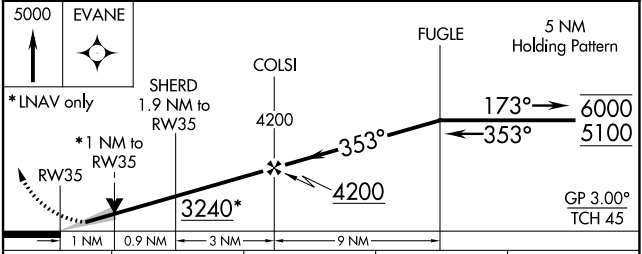
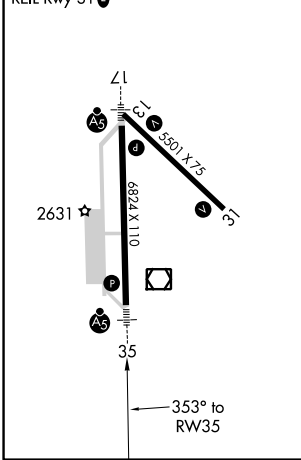
AINSWORTH RGNL (A.N.W)

RNP APCH.	MALSR 	MISSED APPROACH: Climb to 5000 direct EVANE and hold.
<p><b>⚠</b> For uncompensated Baro-VNAV systems, LNAV/VNAV NA below -20°C or above 54°C. For inop ALS, increase LNAV/VNAV all Cats visibility to 3/4 SM and LNAV Cats C and D visibility to 1 SM.</p>		

AWOS-3 <b>118.325</b>	DENVER CENTER <b>127.95 338.2</b>	UNICOM <b>122.8 (CTAF) ①</b>
--------------------------	--------------------------------------	---------------------------------



ELEV <b>2589</b>	TDZE <b>2589</b>
HIRL Rwy 13-31 and 17-35 ①	REIL Rwy 31 ①



CATEGORY	A	B	C	D
LPV DA	2789-1/2		200 (200-1/2)	
LNAV/VNAV DA	2839-1/2		250 (300-1/2)	
LNAV MDA	2960-1/2 371 (400-1/2)		2960-5/8 371 (400-5/8)	
<b>C</b> CIRCLING	3000-1 411 (500-1)	3040-1 451 (500-1)	3040-1 1/2 451 (500-1 1/2)	3200-2 611 (700-2)

NC-2, 30 DEC 2021 to 27 JAN 2022

NC-2, 30 DEC 2021 to 27 JAN 2022