

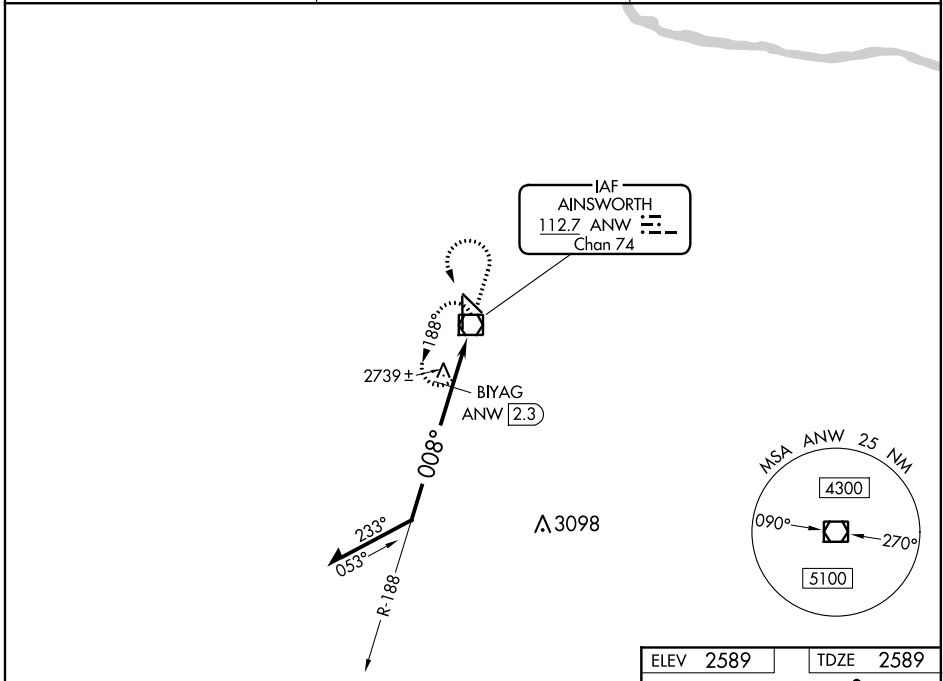
VOR/DME ANW 112.7 Chan 74	APP CRS 008°	Rwy Idg TDZE Apt Elev	6824 2589 2589
--	------------------------	-----------------------------	---

VOR RWY 35

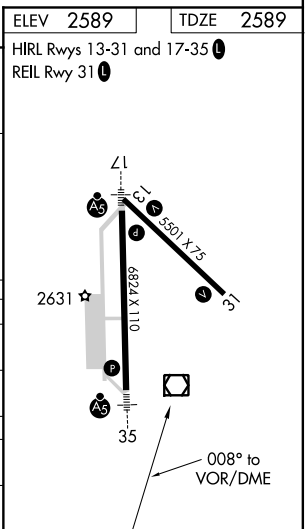
AINSWORTH RGNL (ANW)

<p>When local altimeter setting not received, procedure NA.</p> <p>For inoperative ALS, increase BIYAG fix minimums S-35 Cat D visibility to 1¼.</p>	<p>MALSR</p>	<p>MISSED APPROACH: Climb to 3500 then climbing left turn to 6000 direct ANW VOR/DME and hold.</p>
--	--------------	--

AWOS-3 118,325	DENVER CENTER 127.95 338.2	UNICOM 122.8 (CTAF)
--------------------------	--------------------------------------	-------------------------------



Remain within 10 NM	ANW VOR/DME 6000		3500	6000	ANW
			↑	↶	
	BIYAG ANW 2.3	ANW 1.3			
	2.99° TCH 45				
	1 NM		1.2 NM		
CATEGORY	A	B	C	D	
S-35	3300-½	711 (800-½)	3300-1½ 711 (800-1½)	3300-1¾ 711 (800-1¾)	
CIRCLING	3300-1	711 (800-1)	3300-2 711 (800-2)	3300-2¼ 711 (800-2¼)	
BIYAG FIX MINIMUMS (DME REQUIRED)					
S-35	3000-½	411 (500-½)	3000-¾ 411 (500-¾)	3000-1 411 (500-1)	
CIRCLING	3000-1 411 (500-1)	3040-1 451 (500-1)	3040-1½ 451 (500-1½)	3200-2 611 (700-2)	



NC-2, 30 DEC 2021 to 27 JAN 2022

NC-2, 30 DEC 2021 to 27 JAN 2022