

VOR/DME HUT	APP CRS	Rwy Idg	5502
116.8	025°	TDZE	1497
Chan 115		Apt Elev	1498

VOR RWY 36

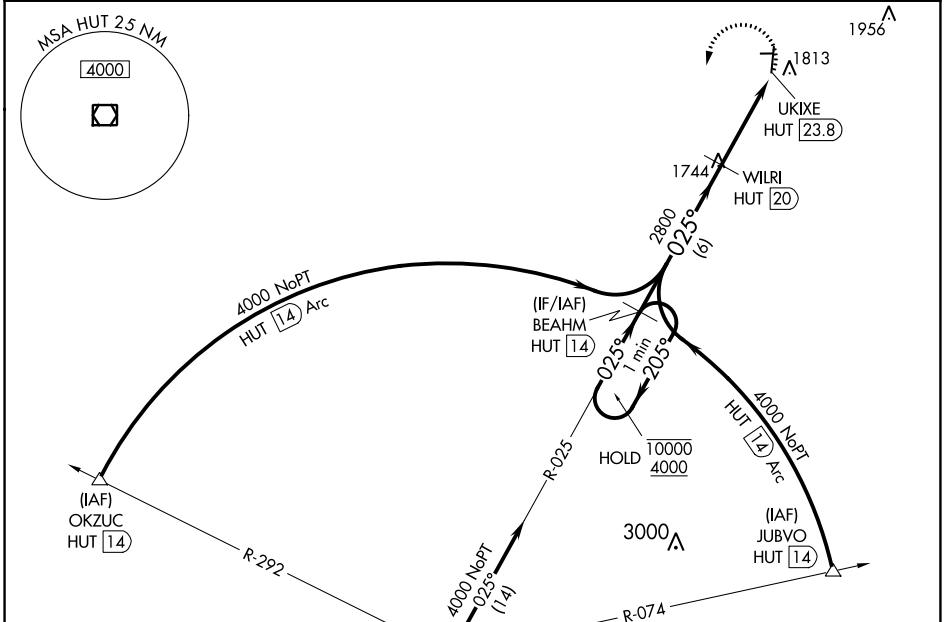
MC PHERSON (MPR)

DME required.

▼ NA Circling NA to Rwy 8 and 26. When local altimeter setting not received, use Salina altimeter setting and increase all MDAs 100 feet; increase S-36 and Circling visibility Cat B ¼ SM and Cat C ½ SM.

MISSED APPROACH: Climbing left turn to 4000 on HUT VOR/DME R-025 to BEAHM/14 DME and hold.

AWOS-3 119,025	WICHITA APP CON 125.5 306.2	UNICOM 122.8 (CTAF)
--------------------------	---------------------------------------	-------------------------------

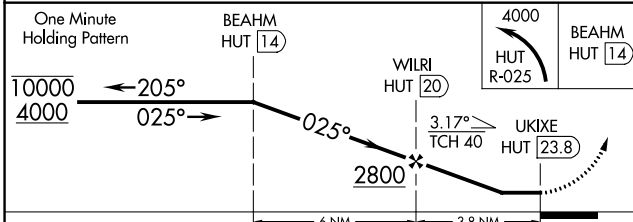
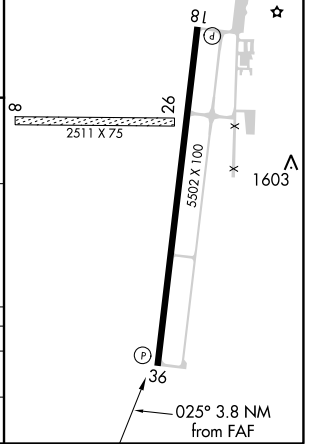


NC-2, 30 DEC 2021 to 27 JAN 2022

NC-2, 30 DEC 2021 to 27 JAN 2022

IAF HUTCHINSON
116.8 HUT Chan 115

ELEV 1498	TDZE 1497
MIRL Rwy 18-36	REIL Rwy 18 and 36



CATEGORY	A	B	C	D
S-36	2160-1	663 (700-1)	2160-1 7/8 663 (700-1 7/8)	NA
CIRCLING	2160-1	662 (700-1)	2160-1 7/8 662 (700-1 7/8)	NA