

(BEAVY5.BEAVY) 20282

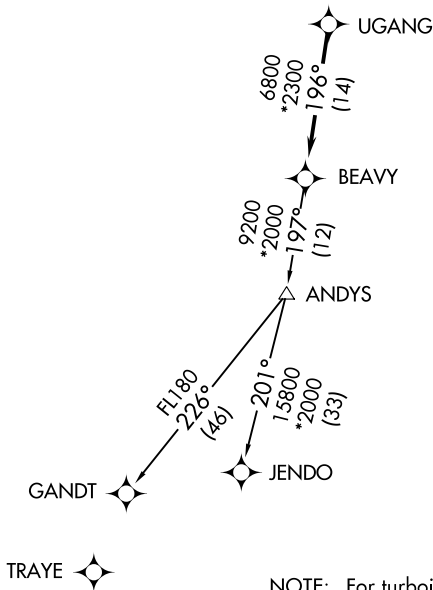
AL-5726 (FAA)

CHARLOTTE-MONROE EXECUTIVE (EQY)
MONROE, NORTH CAROLINA

BEAVY FIVE DEPARTURE (RNAV)

ASOS
135.775
CLNC DEL
132.55
132.55
UNICOM (CTAF)
122.7
CHARLOTTE DEP CON
120.05 307.8

**TOP ALTITUDE:
3000**



TAKEOFF MINIMUMS
Rwys 5, 23: Standard.

- NOTE: For turbojets only.
- NOTE: DME/DME/IRU or GPS required.
- NOTE: RNAV 1.
- NOTE: RADAR required.
- NOTE: If unable to accept climb rates, advise ATC on initial contact.
- NOTE: Upon reaching 10000 MSL, accelerate to and maintain 280K, if unable advise ATC.
- NOTE: Transponder code will be issued via PDC or Charlotte CLNC DEL.

NOTE: Chart not to scale.

DEPARTURE ROUTE DESCRIPTION

Climb on heading assigned by ATC, expect RADAR vectors to UGANG, then on track 196° to BEAVY. Then on assigned transition. Maintain 3000, expect clearance to filed altitude within 10 minutes after departure.

GANDT TRANSITION (BEAVY5.GANDT)
JENDO TRANSITION (BEAVY5.JENDO)

BEAVY FIVE DEPARTURE (RNAV)
(BEAVY5.BEAVY) 03JAN19

MONROE, NORTH CAROLINA
CHARLOTTE-MONROE EXECUTIVE (EQY)

SE-2, 30 DEC 2021 to 27 JAN 2022

SE-2, 30 DEC 2021 to 27 JAN 2022