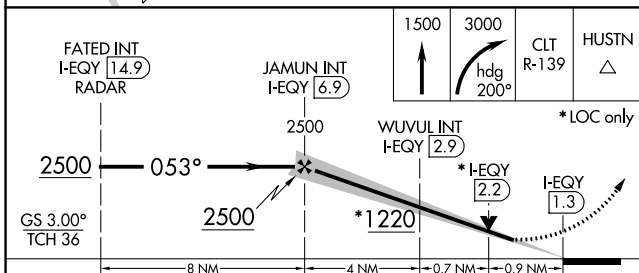
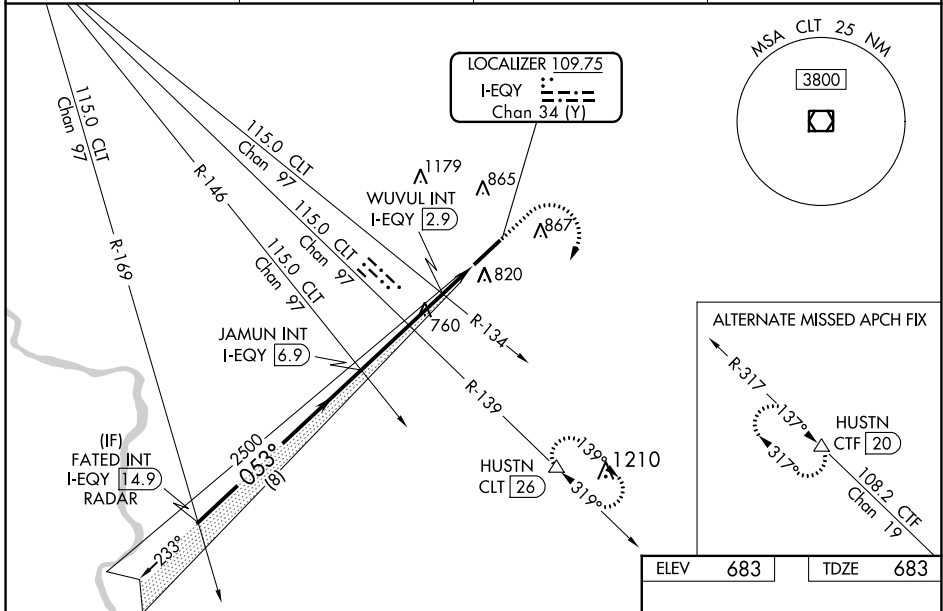


LOC/DME I-EQY 109.75 Chan 34 (Y)	APP CRS 053°	Rwy Idg TDZE Apt Elev	7001 683 683
---	------------------------	-----------------------------	---

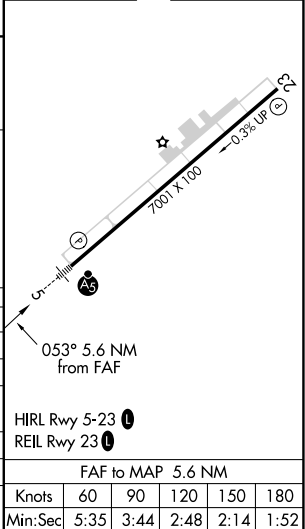
ILS or LOC RWY 5
CHARLOTTE-MONROE EXECUTIVE (EQY)

DME required, RADAR required for procedure entry.		MALSRL 	MISSED APPROACH: Climb to 1500 then climbing right turn to 3000 on heading 200° and on CLT VOR/DME R-139 to HUSTN/CLT 26 DME and hold.
ASOS 135.775	CHARLOTTE APP CON 120.05 307.8	CLNC DEL 132.55	UNICOM 122.7 (CTAF)



ELEV	683	TDZE	683
------	-----	------	-----

CATEGORY	A	B	C	D
S-ILS 5	883-1/2 200 (200-1/2)			
S-LOC 5	1220-1/2	537 (600-1/2)	1220-1	537 (600-1)
CIRCLING	1220-1	537 (600-1)	1220-1 1/2 537 (600-1 1/2)	1480-2 1/2 797 (800-2 1/2)
WUVUL FIX MINIMUMS (DUAL VOR RECEIVERS OR DME REQUIRED)				
S-LOC 5	1020-1/2 337 (400-1/2)			
CIRCLING	1220-1	537 (600-1)	1220-1 1/2 537 (600-1 1/2)	1480-2 1/2 797 (800-2 1/2)



SE-2, 30 DEC 2021 to 27 JAN 2022

SE-2, 30 DEC 2021 to 27 JAN 2022