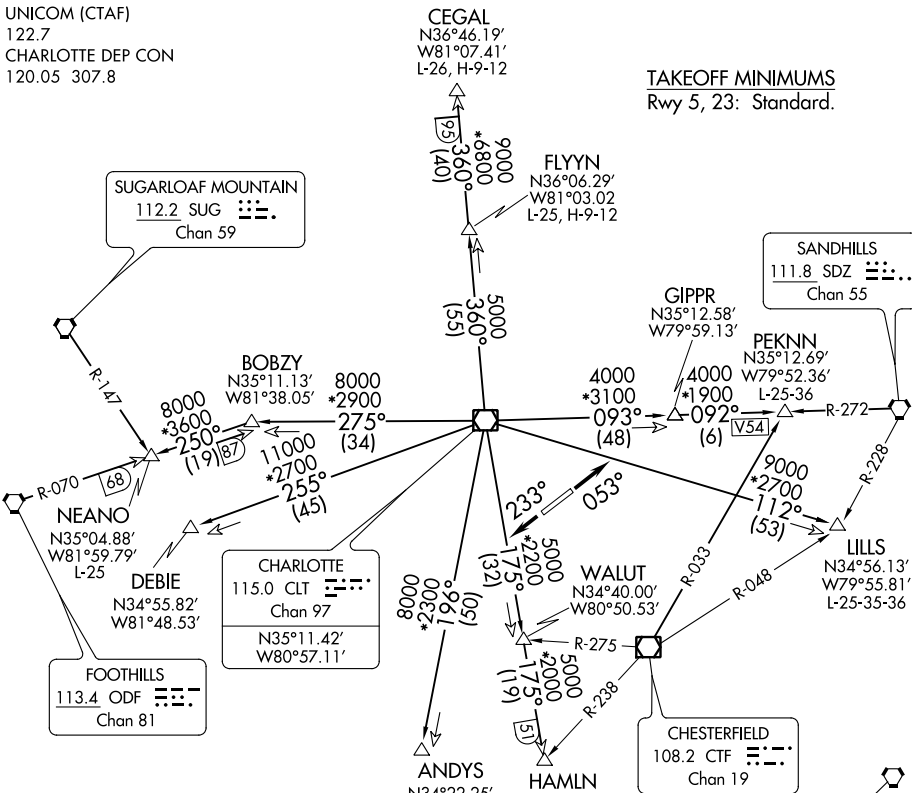


KNIGHTS TWO DEPARTURE

**TOP ALTITUDE:
3000**

ASOS
135.775
CLNC DEL
132.55
UNICOM (CTAF)
122.7
CHARLOTTE DEP CON
120.05 307.8

TAKEOFF MINIMUMS
Rwy 5, 23: Standard.



- NOTE: For propeller aircraft only.
- NOTE: RADAR and DME required.
- NOTE: Turboprops: Operate in a manner that will result in best forward speed and climb rate.
- NOTE: Transponder code will be issued via Charlotte clearance delivery.

- ANDYS TRANSITION: Expect vectors to intercept CLT R-196 to ANDYS.
- CEGAL TRANSITION: Expect vectors to intercept CLT R-360 to CEGAL.
- DEBIE TRANSITION: Expect vectors to intercept CLT R-255 to DEBIE.
- FLYYN TRANSITION: Expect vectors to intercept CLT R-360 to FLYYN.
- HAMLN TRANSITION: Expect vectors to intercept CLT R-175 to HAMLN.
- LILLS TRANSITION: Expect vectors to intercept CLT R-112 to LILLS.
- NEANO TRANSITION: Expect vectors to intercept CLT R-275 to BOBZY then ODF R-070 to NEANO.
- PEKNN TRANSITION: Expect vectors to intercept CLT R-093 to GIPPR then SDZ R-272 to PEKNN.

(NARRATIVE ON FOLLOWING PAGE)

NOTE: Chart not to scale.

SE-2, 30 DEC 2021 to 27 JAN 2022

SE-2, 30 DEC 2021 to 27 JAN 2022

KNIGHTS TWO DEPARTURE