

WAAS CH 90141 W23A	APP CRS 233°	Rwy Idg 7001 TDZE 671 Apt Elev 683
--	------------------------	---

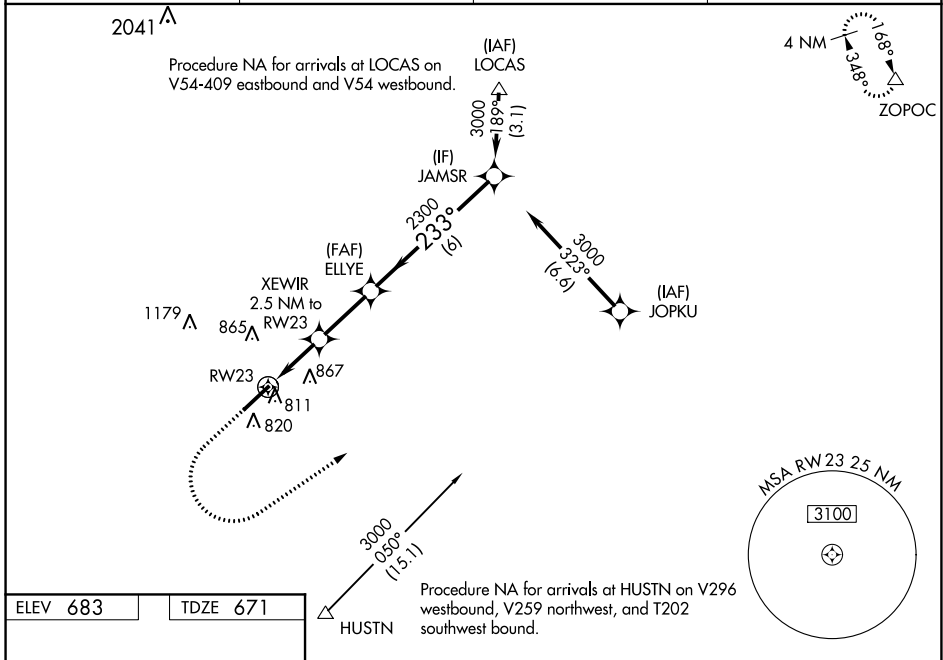
RNAV (GPS) RWY 23

CHARLOTTE-MONROE EXECUTIVE (EQY)

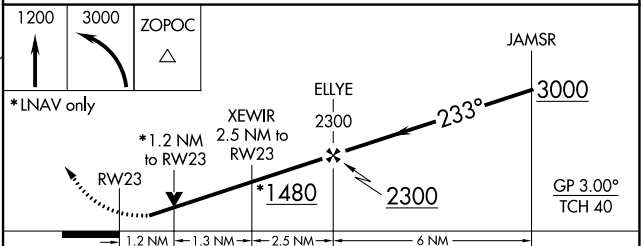
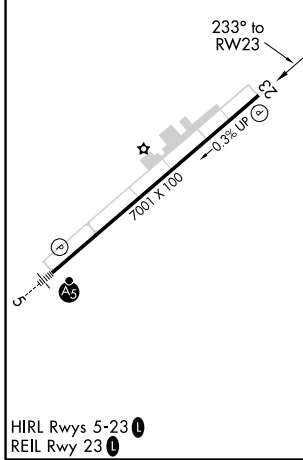
⚠ For uncompensated Baro-VNAV systems, LNAV/VNAV NA below -10°C (14°F) or above 54°C (130°F).
 Baro-VNAV and VDP NA when using Charlotte altimeter setting. DME/DME RNP-0.3 NA.
 ⚠ Rwy 23 helicopter visibility reduction below 3/4 SM NA. When local altimeter setting not received, use Charlotte altimeter setting: increase LPV DA to 995 feet and visibility all Cats 1/4 SM; increase LNAV/VNAV DA to 1037 feet and visibility all Cats 1/8 SM; increase all MDA 60 feet and LNAV Cats C/D and Circling Cat D visibility 1/4 mile.

MISSED APPROACH:
 Climb to 1200 then climbing left turn to 3000 direct to ZOPC and hold.

ASOS 135.775	CHARLOTTE APP CON 120.05 307.8	CLNC DEL 132.55	UNICOM 122.7 (CTAF) 0
------------------------	--	---------------------------	---------------------------------



ELEV 683	TDZE 671
----------	----------



CATEGORY	A	B	C	D
LPV DA		939-7/8	268 (300-7/8)	
LNAV/VNAV DA		981-1 1/8	310 (300-1 1/8)	
LNAV MDA	1080-1	409 (400-1)	1080-1 1/8	409 (400-1 1/8)
<input checked="" type="checkbox"/> CIRCLING	1220-1	537 (600-1)	1220-1 1/2	1480-2 1/2
			537 (600-1 1/2)	797 (800-2 1/2)

SE-2, 30 DEC 2021 to 27 JAN 2022

SE-2, 30 DEC 2021 to 27 JAN 2022