

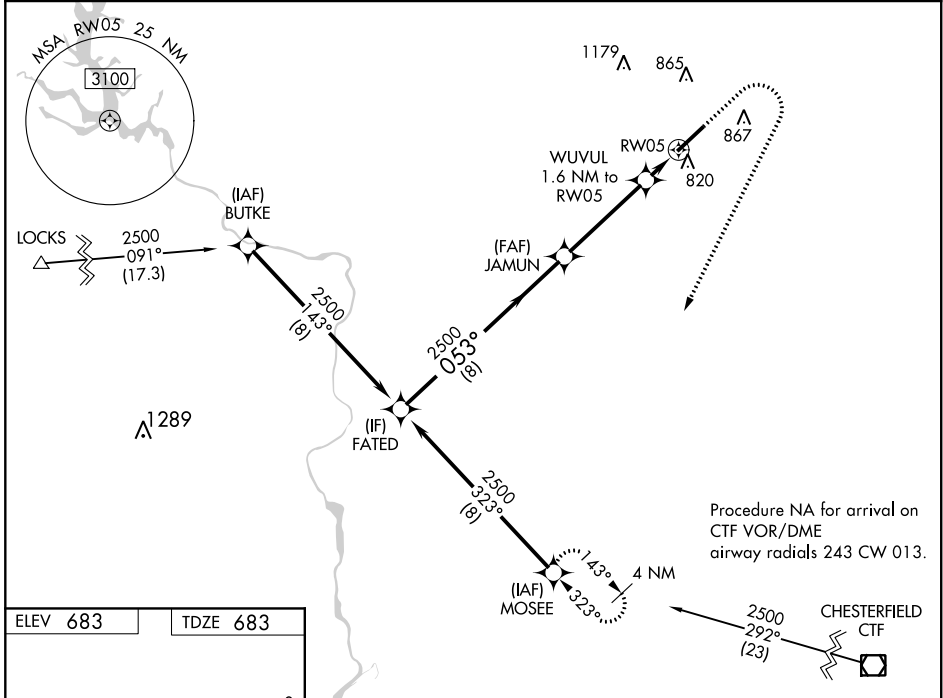
WAAS CH 66002 W05A	APP CRS 053°	Rwy Idg TDZE Apt Elev	7001 683 683
--	------------------------	-----------------------------	---

RNAV (GPS) RWY 5

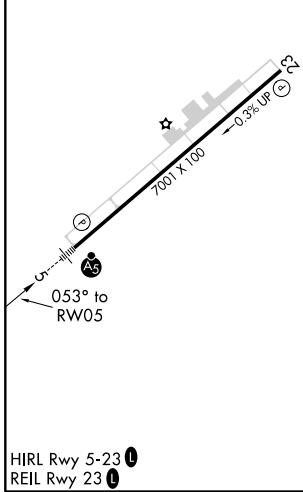
CHARLOTTE-MONROE EXECUTIVE (EQY)

RNP APCH.	MALSR	MISSED APPROACH: Climb to 1100 then climbing right turn to 2500 direct MOSEEE and hold.
<p>⚠ For uncompensated Baro-VNAV systems, LNAV/VNAV NA below -10°C or above 54°C.</p>		

ASOS 135.775	CHARLOTTE APP CON 120.05 307.8	CLNC DEL 132.55	UNICOM 122.7 (CTAF) 0
------------------------	--	---------------------------	---------------------------------



ELEV 683	TDZE 683
----------	----------



	1100	2500	MOSEEE	
	↑	↷	✧	*LNAV only.
FATED	JAMUN	WUVUL	RWY 5	
2500	2500	1.6 NM to RW05	*0.9 NM to RW05	
GP 3.00° TCH 46	2500	*1220		
	8 NM	4 NM	0.7 NM	0.9 NM
CATEGORY	A	B	C	D
LPV DA		883-1/2	200 (200-1/2)	
LNAV/VNAV DA		1001-5/8	318 (400-3/8)	
LNAV MDA		1020-1/2	337 (400-1/2)	
<input checked="" type="checkbox"/> CIRCLING	1220-1	537 (600-1)	1220-1/2 537 (600-1/2)	1480-2/2 797 (800-2/2)

SE-2, 30 DEC 2021 to 27 JAN 2022

SE-2, 30 DEC 2021 to 27 JAN 2022