

(DAWNN1.DAWNN) 21336
DAWNN ONE DEPARTURE

AL-5733 (FAA)

EAGLE CREEK AIRPARK (EYE)
 INDIANAPOLIS, INDIANA

**TOP ALTITUDE:
 ASSIGNED BY ATC**

ASOS
 121.575
 CLNC DEL
 128.6
 INDIANAPOLIS DEP CON
 119.05 317.8

BRICKYARD
 116.3 VHP
 Chan 110

TERRE HAUTE
 115.3 TTH
 Chan 100

HOOSIER
 110.2 OOM
 Chan 39

SNEVA
 RADAR
 N39°21.43'
 W86°18.96'

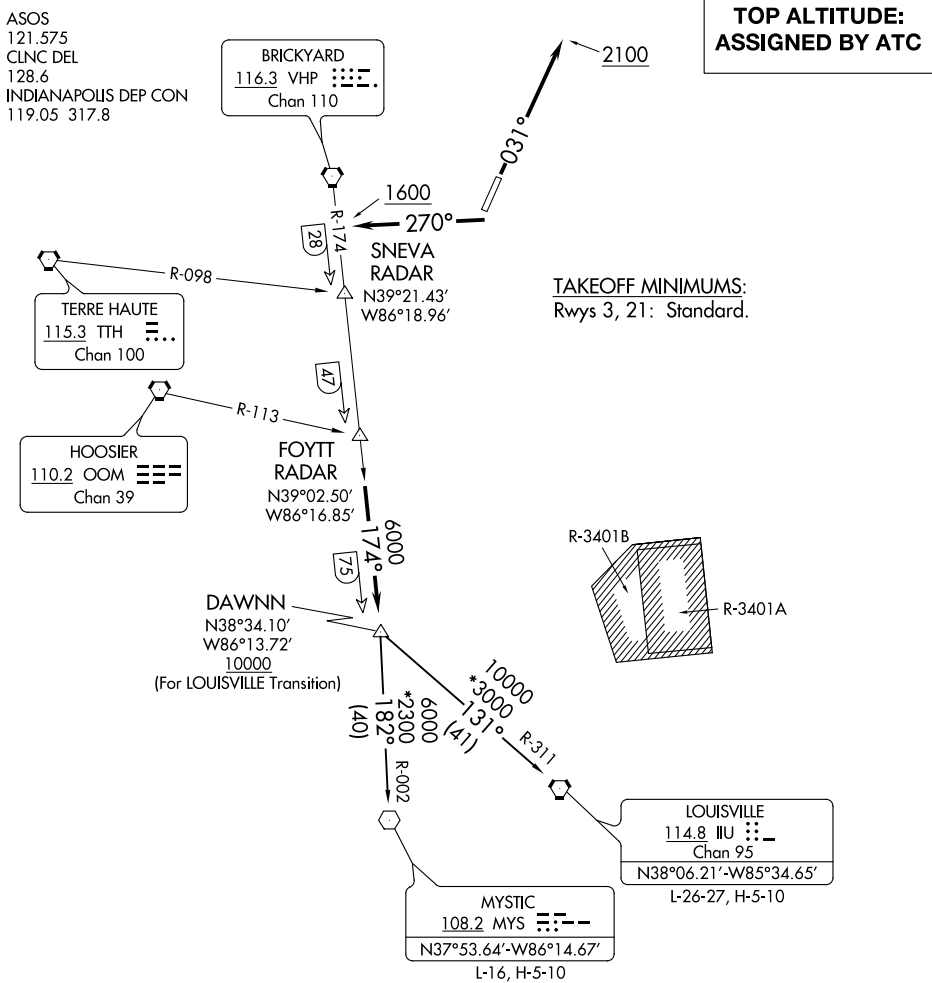
FOYTT
 RADAR
 N39°02.50'
 W86°16.85'

DAWNN
 N38°34.10'
 W86°13.72'
 10000
 (For LOUISVILLE Transition)

MYSTIC
 108.2 MYS
 N37°53.64'-W86°14.67'
 L-16, H-5-10

LOUISVILLE
 114.8 IU
 Chan 95
 N38°06.21'-W85°34.65'
 L-26-27, H-5-10

TAKEOFF MINIMUMS:
 Rwy 3, 21: Standard.



EC-2, 30 DEC 2021 to 27 JAN 2022

EC-2, 30 DEC 2021 to 27 JAN 2022

- NOTE: RADAR required.
- NOTE: Select appropriate localizer/DME frequency/channel prior to departure.
- NOTE: Turbojets accelerate to 250K until reaching 10000, if unable advise ATC.
- NOTE: Assigned to aircraft with a requested altitude of 11000 or above.

(NARRATIVE ON FOLLOWING PAGE)

NOTE: Chart not to scale.

DAWNN ONE DEPARTURE
 (DAWNN1.DAWNN) 07DEC17

INDIANAPOLIS, INDIANA
 EAGLE CREEK AIRPARK (EYE)