

VOR/DME CTF 108.2 Chan 19	APP CRS 155°	Rwy Idg TDZE Apt Elev N/A N/A 364
---	------------------------	--

VOR-A

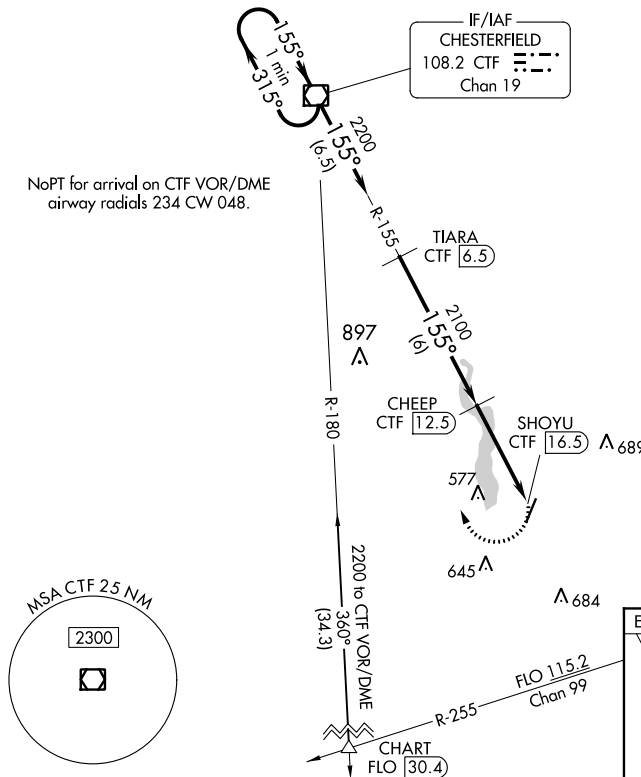
HARTSVILLE RGNL (HVS)

▼	DME required.	MISSED APPROACH: Climbing right turn to 2200 direct CTF VOR/DME and hold.
----------	---------------	---

AWOS-3 118.225	SHAW APP CON ★ 125.4 318.1	UNICOM 122.8 (CTAF) 0
--------------------------	--------------------------------------	--

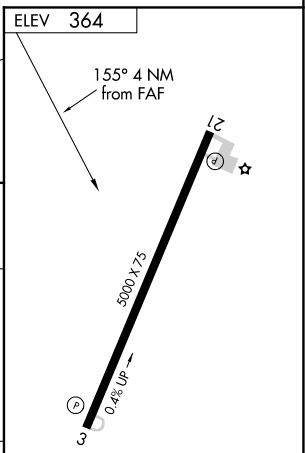
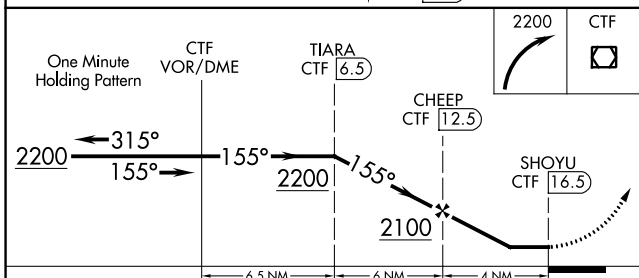
DME REQUIRED

NoPT for arrival on CTF VOR/DME airway radials 234 CW 048.



SE-2, 30 DEC 2021 to 27 JAN 2022

SE-2, 30 DEC 2021 to 27 JAN 2022



CATEGORY	A	B	C	D
C CIRCLING	860-1	496 (500-1)	960-1½ 596 (600-1½)	NA

MIRL Rwy 3-21 **0**