

VOR/DME AIR	APP CRS	Rwy Idg	3805
117.1	229°	TDZE	1197
Chan 118		Apt Elev	1197

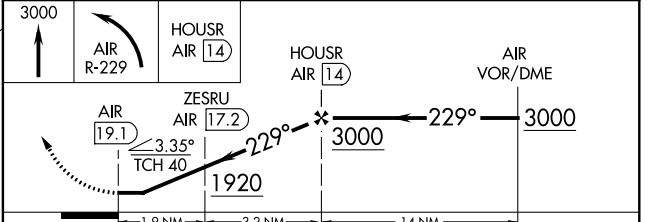
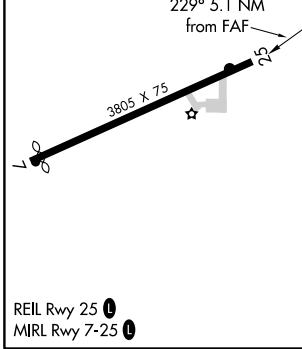
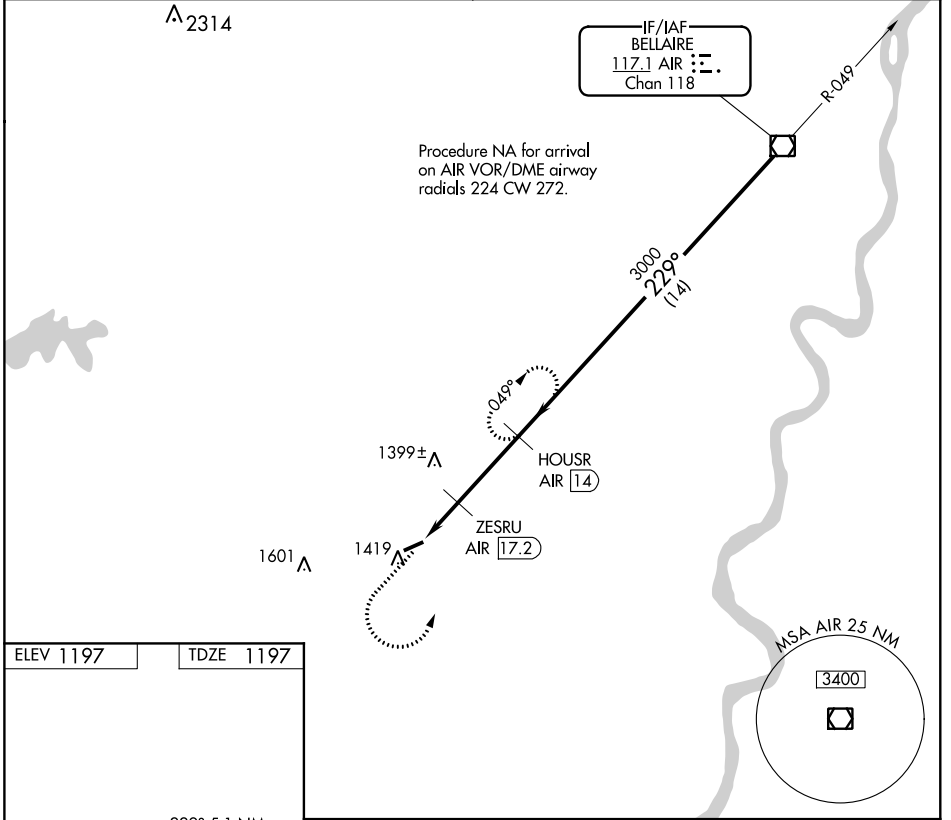
# VOR/DME RWY 25

MONROE COUNTY (4G5)

**⚠** Use Wheeling Ohio Co, WV alimeter setting; when not received use Parkersburg, WV alimeter setting and increase all MDA 60 feet; increase S-25 Cat C visibility 1/8 mile and Circling Cat C visibility 1/4 mile. Procedure NA at night. Helicopter visibility reduction below 1 SM NA.

**⚠ NA** MISSED APPROACH: Climb to 3000 then left turn on AIR VOR/DME R-229 to HOUSR/AIR 14 DME and hold.

CLEVELAND CENTER <b>126.95 239.3</b>	UNICOM <b>122.8 (CTAF) 0</b>
---	---------------------------------



CATEGORY	A	B	C	D
S-25	1740-1	543 (600-1)	1740-1 5/8 543 (600-1 5/8)	NA
<b>C</b> CIRCLING	1860-1	663 (700-1)	1860-1 3/4 663 (700-1 3/4)	NA

EC-2, 30 DEC 2021 to 27 JAN 2022

EC-2, 30 DEC 2021 to 27 JAN 2022