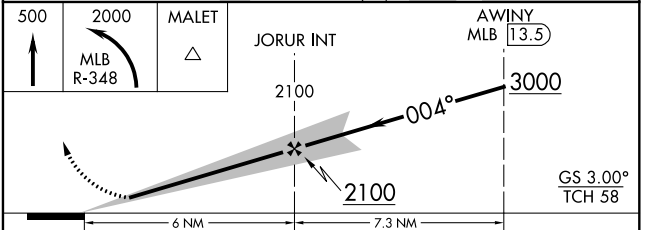
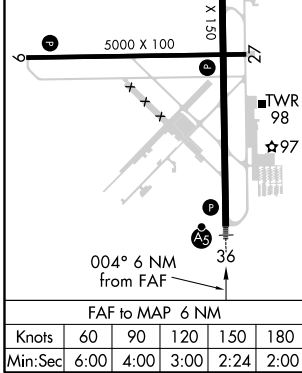
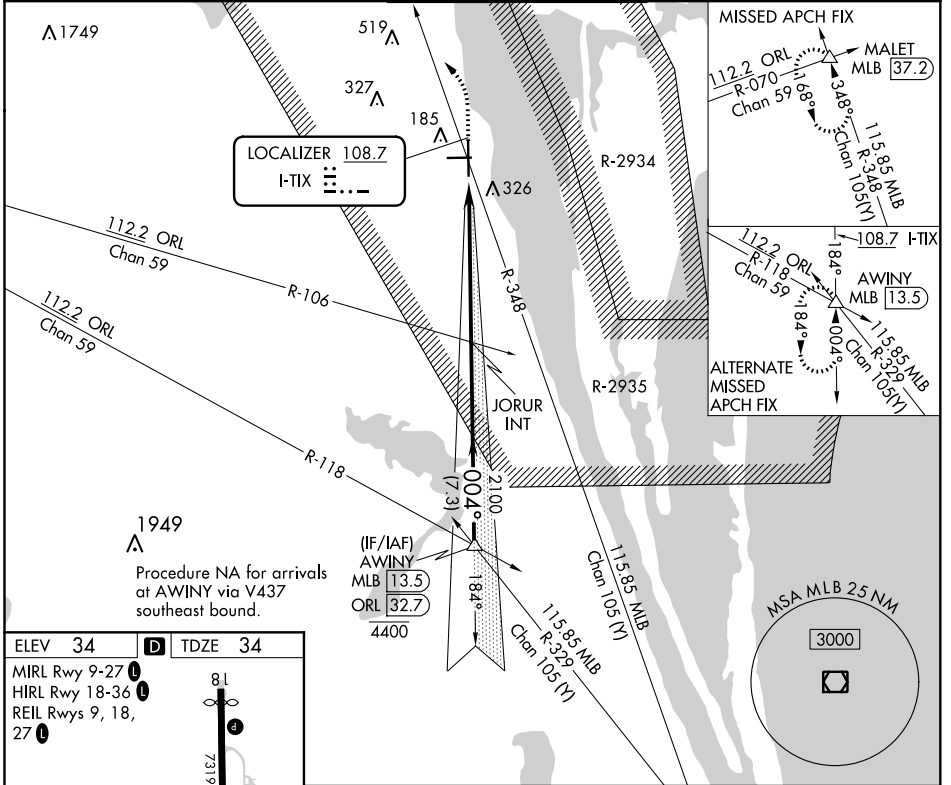


LOC I-TIX <b>108.7</b>	APP CRS <b>004°</b>	Rwy Idg <b>7244</b>
		TDZE <b>34</b>
		Apt Elev <b>34</b>

# ILS or LOC RWY 36

SPACE COAST RGNL(TIX)

<p><b>▽</b> For inop ALS, increase S-LOC 36 Cat C/D visibility to 1<math>\frac{3}{8}</math> SM.</p>		<p><b>MALSR</b></p>	<p><b>MISSED APPROACH:</b> Climb to 500 then climbing left turn to 2000 on MLB VOR/DME R-348 to MALET INT/37.2 DME and hold.</p>	
<p>ATIS <b>120.625</b></p>	<p>ORLANDO APP CON <b>134.95 281.425</b></p>	<p>SPACE COAST TOWER ★ <b>118.9 (CTAF)</b></p>	<p>GND CON <b>121.85</b></p>	<p>UNICOM <b>122.95</b></p>



CATEGORY	A	B	C	D
S-ILS 36	234- $\frac{1}{2}$ 200 (200- $\frac{1}{2}$ )			
S-LOC 36	500- $\frac{1}{2}$	466 (500- $\frac{1}{2}$ )	500-1	466 (500-1)
<b>C</b> CIRCLING	640-1	606 (700-1)	640- $\frac{3}{4}$ 606 (700- $\frac{3}{4}$ )	640-2 606 (700-2)

SE-3, 30 DEC 2021 to 27 JAN 2022

SE-3, 30 DEC 2021 to 27 JAN 2022