

WAAS CH 72609 W14A	APP CRS 141°	Rwy Idg TDZE Apt Elev	4203 2546 2546
--	------------------------	-----------------------------	---

RNAV (GPS) RWY 14

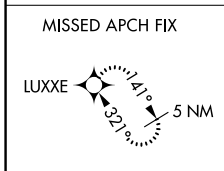
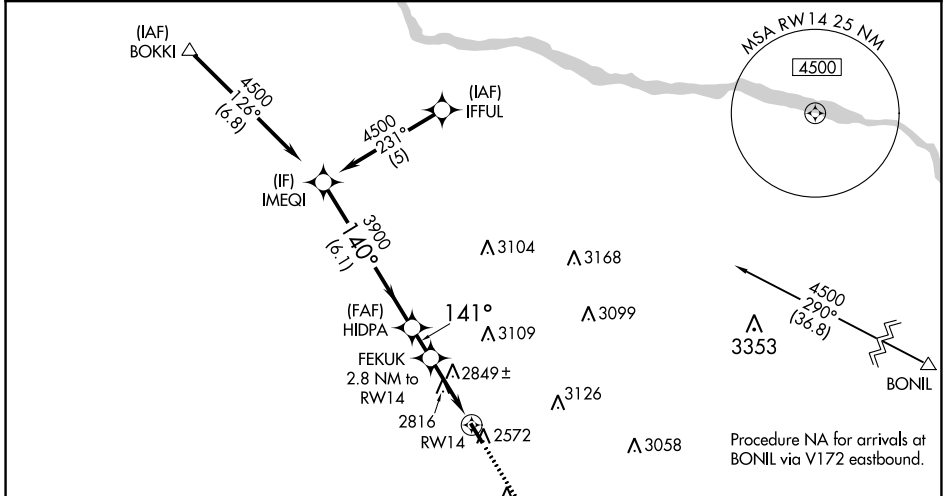
BROKEN BOW MUNI/KEITH GLAZE FLD (BBW)

RNP APCH.

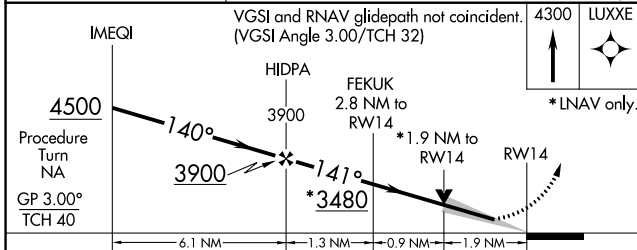
▼ When local altimeter setting not received, use North Platte Rgnl/Lee Bird Fld altimeter setting and increase all DA/MDA 160 feet and increase LPV all Cats visibility ½ mile, LNAV/VNAV all Cats visibility ¾ mile, LNAV and Circling Cat B visibility ¼ mile. VDP and Baro/VNAV NA when using North Platte Rgnl/Lee Bird Fld altimeter setting. For uncompensated Baro-VNAV systems, LNAV/VNAV NA below -20°C or above 54°C. Rwy 14 helicopter visibility reduction below ¾ SM NA.

MISSED APPROACH:
Climb to 4300 direct LUXXE and hold.

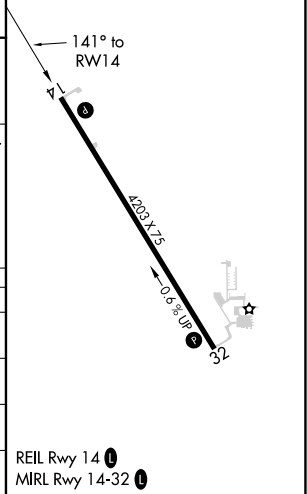
ASOS 120.0	DENVER CENTER 132.7 226.675	UNICOM 122.8 (CTAF) 0
----------------------	---------------------------------------	---------------------------------



ELEV 2546	TDZE 2546
-----------	-----------



CATEGORY	A	B	C	D
LPV DA	2801-1	255 (300-1)		NA
LNAV/VNAV DA	3191-2 ¼	645 (700-2 ¼)		NA
LNAV MDA	3180-1	634 (700-1)		NA
CIRCLING	3180-1	643 (700-1)		NA



REIL Rwy 14 0
MIRL Rwy 14-32 0

NC-2, 30 DEC 2021 to 27 JAN 2022

NC-2, 30 DEC 2021 to 27 JAN 2022