

WAAS CH <b>97409</b> <b>W32A</b>	APP CRS <b>321°</b>	Rwy Idg TDZE Apt Elev	<b>4203</b> <b>2534</b> <b>2546</b>
--	------------------------	-----------------------------	---

# RNAV (GPS) RWY 32

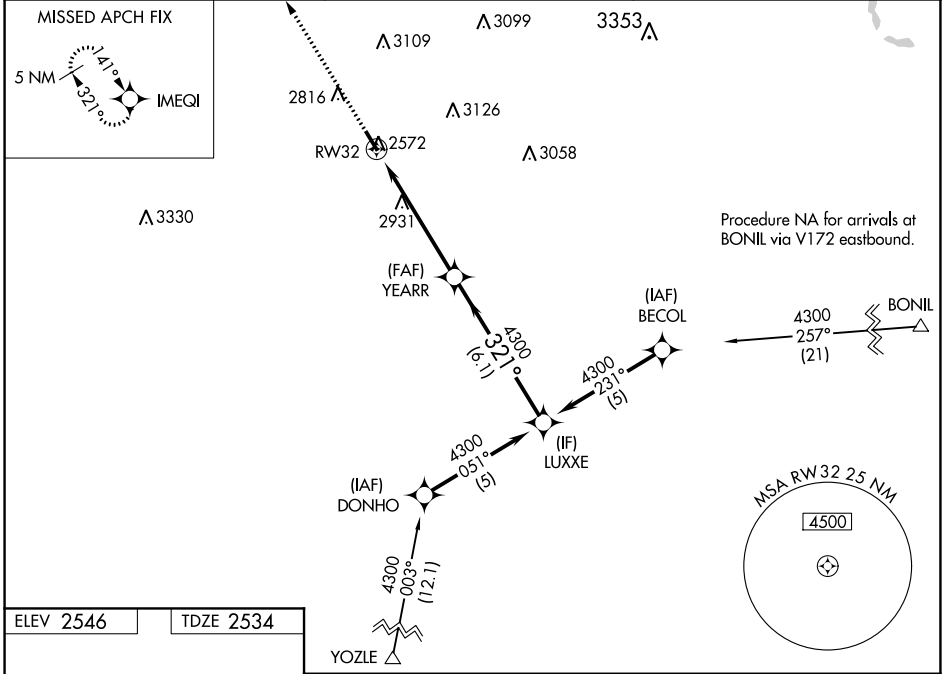
BROKEN BOW MUNI/KEITH GLAZE FLD (BBW)

RNP APCH.

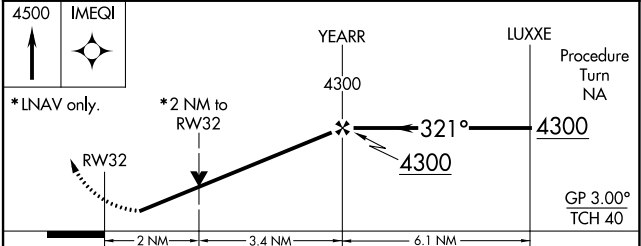
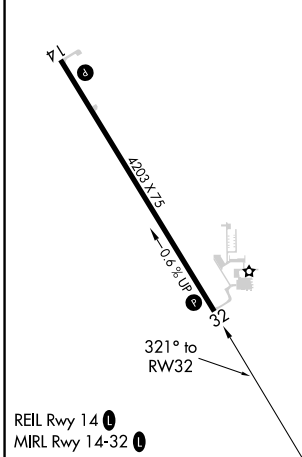
▼ For uncompensated Baro-VNAV systems, LNAV/VNAV NA below -20°C or above 54°C. When local altimeter setting not received, use North Platte Rgnl/Lee Bird Fld altimeter setting and increase all DA/MDA 160 feet and increase LPV all Cats visibility ¾ mile, increase LNAV/VNAV all Cats visibility 1¼ mile, increase LNAV and Circling Cat B visibility ½ mile. VDP and Baro/VNAV NA when using North Platte Rgnl/Lee Bird Fld altimeter setting. Rwy 32 helicopter visibility reduction below ¾ SM NA.

MISSED APPROACH:  
Climb to 4500 direct  
IMEQI and hold.

ASOS <b>120.0</b>	DENVER CENTER <b>132.7 226.675</b>	UNICOM <b>122.8 (CTAF) 0</b>
----------------------	---------------------------------------	---------------------------------



ELEV 2546	TDZE 2534
-----------	-----------



CATEGORY	A	B	C	D
LPV DA	2833-1	299 (300-1)		NA
LNAV/VNAV DA	3301-2¾	767 (800-2¾)		NA
LNAV MDA	3200-1	666 (700-1)		NA
CIRCLING	3200-1	654 (700-1)		NA