

VOR/DME CUZ 108.2 Chan 19	APP CRS 316°	Rwy Idg TDZE Apt Elev	4203 2534 2546
--	------------------------	-----------------------------	---

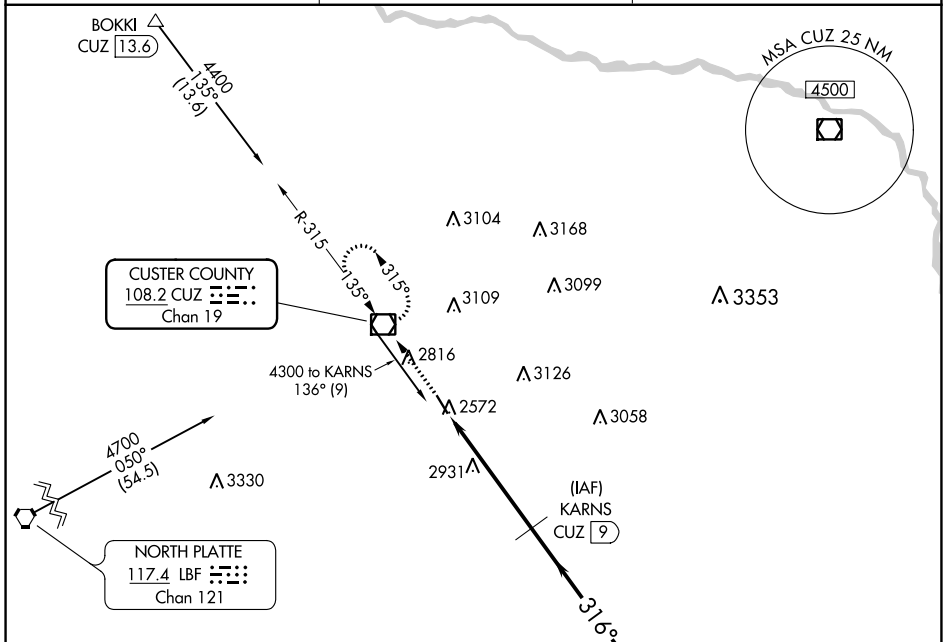
VOR/DME RWY 32

BROKEN BOW MUNI/KEITH GLAZE FLD (BBW)

⚠ When local altimeter setting not received; use North Platte Rgnl/Lee Bird Fld altimeter setting and increase all MDAs 160 feet, increase Cat B visibility to 1/4 miles, and Circling Cat B visibility to 1/4 miles. VDP NA when using North Platte Rgnl/Lee Bird Fld altimeter setting. Rwy 32 helicopter visibility reduction below 3/4 SM NA.

MISSED APPROACH: Climb to 4400 direct CUZ VOR/DME and hold.

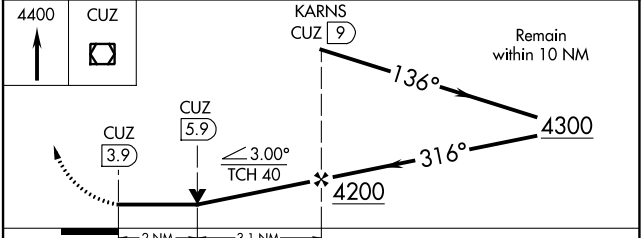
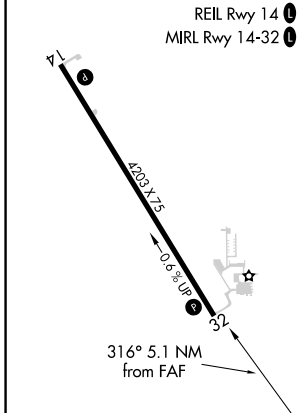
ASOS 120.0	DENVER CENTER 132.7 226.675	UNICOM 122.8 (CTAF)
----------------------	---------------------------------------	-------------------------------



NC-2, 30 DEC 2021 to 27 JAN 2022

NC-2, 30 DEC 2021 to 27 JAN 2022

ELEV 2546	TDZE 2534
-----------	-----------



FAF to MAP 5.1 NM					
Knots	60	90	120	150	180
Min:Sec	5:06	3:24	2:33	2:02	1:42

CATEGORY	A	B	C	D
S-32	3200-1	666 (700-1)	NA	
CIRCLING	3200-1	654 (700-1)	NA	