

(BLTWY7.BLTWY) 21280

AL-5824 (FAA)

BAY CITY RGNL (BYY)

# BLTWY SEVEN DEPARTURE (RNAV)

BAY CITY, TEXAS

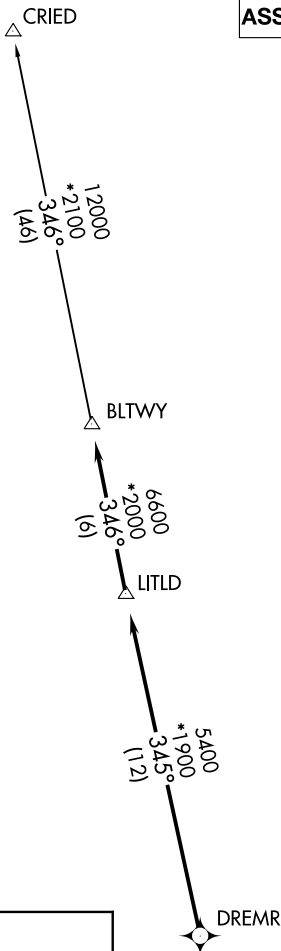
CTAF  
122.8  
HOUSTON DEP CON  
128.6 360.85

**TOP ALTITUDE:  
ASSIGNED BY ATC**

NOTE: RADAR required.  
NOTE: DME/DME/IRU or GPS required.  
NOTE: RNAV 1.

### TAKEOFF MINIMUMS

Rwys 13, 31: Standard with minimum  
climb of 500' per NM to 560.



SC-5, 30 DEC 2021 to 27 JAN 2022

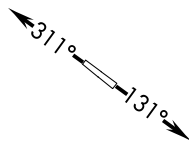
SC-5, 30 DEC 2021 to 27 JAN 2022

### DEPARTURE ROUTE DESCRIPTION

TAKEOFF RUNWAY 13: Climb on heading 131° or as assigned by ATC for RADAR vectors to DREMR, thence . . .  
TAKEOFF RUNWAY 31: Climb on heading 311° or as assigned by ATC for RADAR vectors to DREMR, thence . . .

...on track 345° to LITLD, then on track 346° to BLTWY, then on (transition). Maintain ATC assigned altitude. Expect filed altitude 10 minutes after departure.

CRIED TRANSITION (BLTWY7.CRIED)



NOTE: Chart not to scale.

# BLTWY SEVEN DEPARTURE (RNAV)

(BLTWY7.BLTWY) 07OCT21

BAY CITY, TEXAS

BAY CITY RGNL (BYY)