

(STYCK8.STYCK) 21280

AL-5824 (FAA)

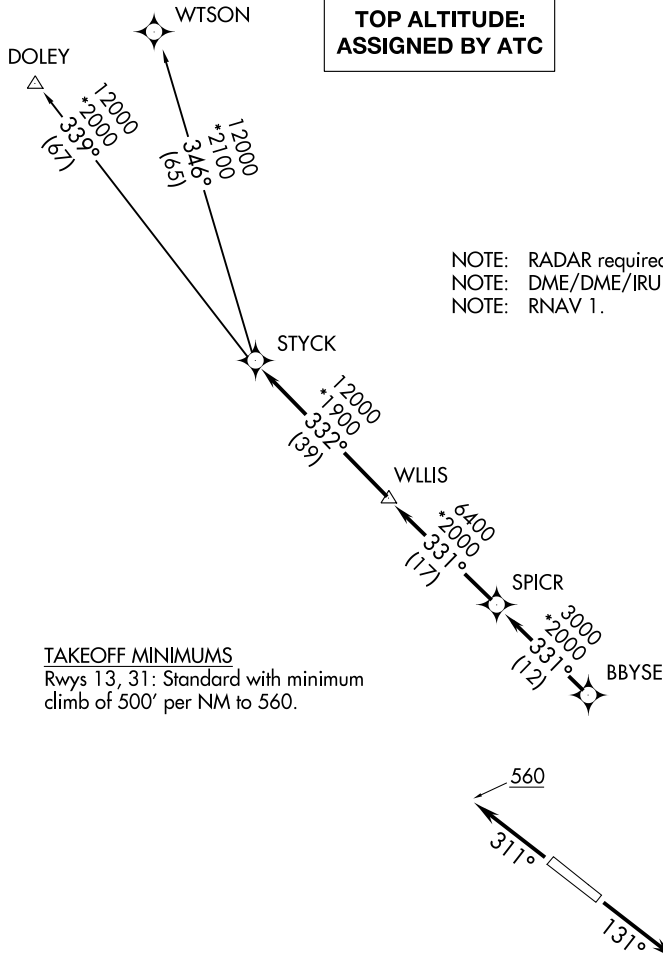
BAY CITY RGNL (BY Y)

# STYCK EIGHT DEPARTURE (RNAV)

BAY CITY, TEXAS

AWOS-3  
118.075  
CTAF  
122.8  
HOUSTON DEP CON  
128.6 360.85

**TOP ALTITUDE:  
ASSIGNED BY ATC**



NOTE: RADAR required.  
NOTE: DME/DME/IRU or GPS required.  
NOTE: RNAV 1.

**TAKEOFF MINIMUMS**  
Rwys 13, 31: Standard with minimum  
climb of 500' per NM to 560.

NOTE: Chart not to scale.

## DEPARTURE ROUTE DESCRIPTION

**TAKEOFF RUNWAY 13:** Climb on heading 131° to 560 for RADAR vectors to BBYSE, thence. . .  
**TAKEOFF RUNWAY 31:** Climb on heading 311° to 560 for RADAR vectors to BBYSE, thence. . .  
. . .on track 331° to SPICR, then on track 331° to WLLIS, then on track 332° to STYCK, then on  
(transition). Maintain ATC assigned altitude. Expect filed altitude 10 minutes after departure.

DOLEY TRANSITION (STYCK8.DOLEY)  
WTSON TRANSITION (STYCK8.WTSON)

# STYCK EIGHT DEPARTURE (RNAV)

(STYCK8.STYCK) 07OCT21

BAY CITY, TEXAS  
BAY CITY RGNL (BY Y)

SC-5, 30 DEC 2021 to 27 JAN 2022

SC-5, 30 DEC 2021 to 27 JAN 2022