

# WYLSN EIGHT DEPARTURE (RNAV)

HOUSTON DEP CON  
128.6 360.85

NOTE: RADAR required.  
NOTE: DME/DME/IRU or GPS required.  
NOTE: RNAV 1.

### TAKEOFF MINIMUMS

Rwy 13, 31: Standard with minimum  
climb of 500' per NM to 560.

### DEPARTURE ROUTE DESCRIPTION

TAKEOFF RUNWAY 13: Climb on heading 131° to 560 for RADAR vectors to WYLSN, thence. . . .

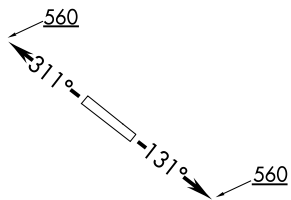
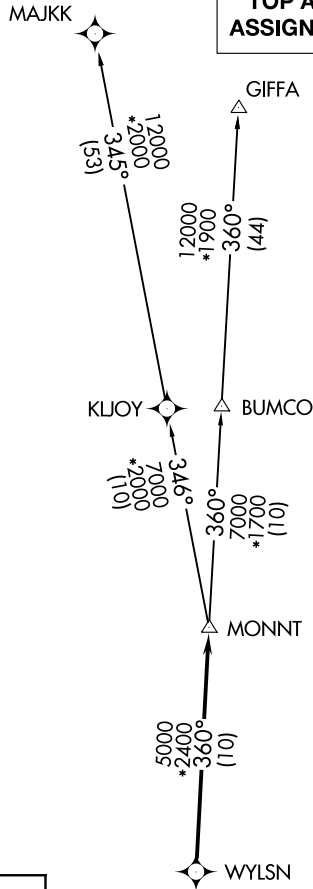
TAKEOFF RUNWAY 31: Climb on heading 311° to 560 for RADAR vectors to WYLSN, thence. . . .

. . . .on track 360° to MONNT, then on (transition).  
Maintain ATC assigned altitude. Expect filed altitude  
10 minutes after departure.

GIFFA TRANSITION (WYLSN8.GIFFA)

MAJJK TRANSITION (WYLSN8.MAJJK)

**TOP ALTITUDE:  
ASSIGNED BY ATC**



NOTE: Chart not to scale.

# WYLSN EIGHT DEPARTURE (RNAV)