

APP CRS **116°**  
 Rwy Idg **4304**  
 TDZE **869**  
 Apt Elev **869**

# RNAV (GPS) RWY 11

LUCE COUNTY (ERY)

RNP APCH - GPS.

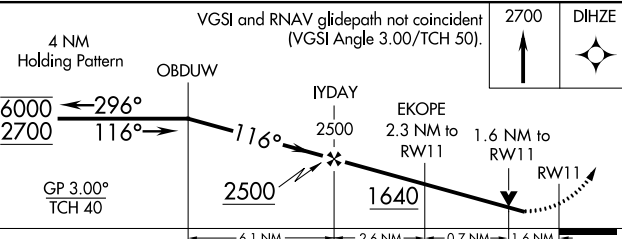
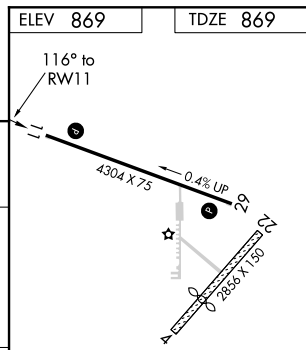
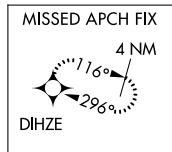
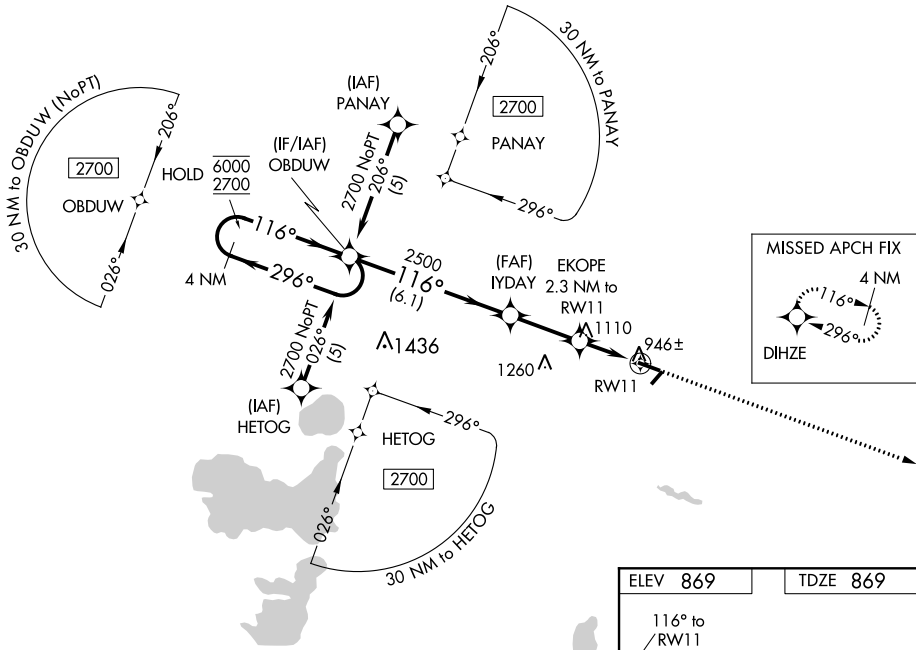
**⚠** Circling NA to Rwys 4 and 22. Rwy 11 helicopter visibility reduction below 3/4 SM NA.  
**⚠** For uncompensated Baro-VNAV systems, LNAV/VNAV NA below -16°C or above 54°C.

MISSED APPROACH:  
 Climb to 2700 direct  
 DIHZE and hold.

AWOS-3  
**119.525**

MINNEAPOLIS CENTER  
**134.6 354.05**

UNICOM  
**122.8 (CTAF) 0**



4 NM Holding Pattern	VGSI and RNAV glidepath not coincident (VGSI Angle 3.00/TCH 50).				2700	DIHZE
	ObDUW					
	6000	2700	2500	1640	1260	
	← 296°		116° →			
	GP 3.00° TCH 40					
	← 6.1 NM		← 2.6 NM	← 0.7 NM	← 1.6 NM	
CATEGORY	A		B	C	D	
LNAV/DA/VNAV			1259-1 1/8	390 (400-1 1/8)		
LNAV MDA	1420-1		551 (600-1)	1420-1 5/8	551 (600-1 5/8)	
CIRCLING	1420-1		551 (600-1)	1420-1 5/8	1460-2	591 (600-2)

MIRL Rwy 11-29 0  
 REIL Rws 11 and 29 0

EC-1, 30 DEC 2021 to 27 JAN 2022

EC-1, 30 DEC 2021 to 27 JAN 2022