

WAAS CH 40418 W29A	APP CRS 296°	Rwy Idg TDZE Apt Elev	4304 867 869
--	------------------------	-----------------------------	---

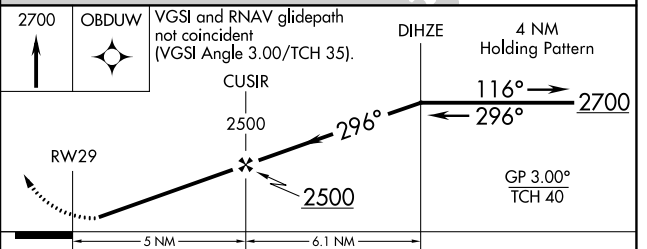
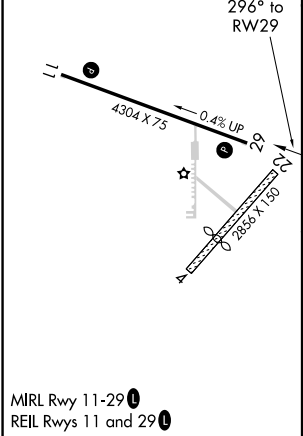
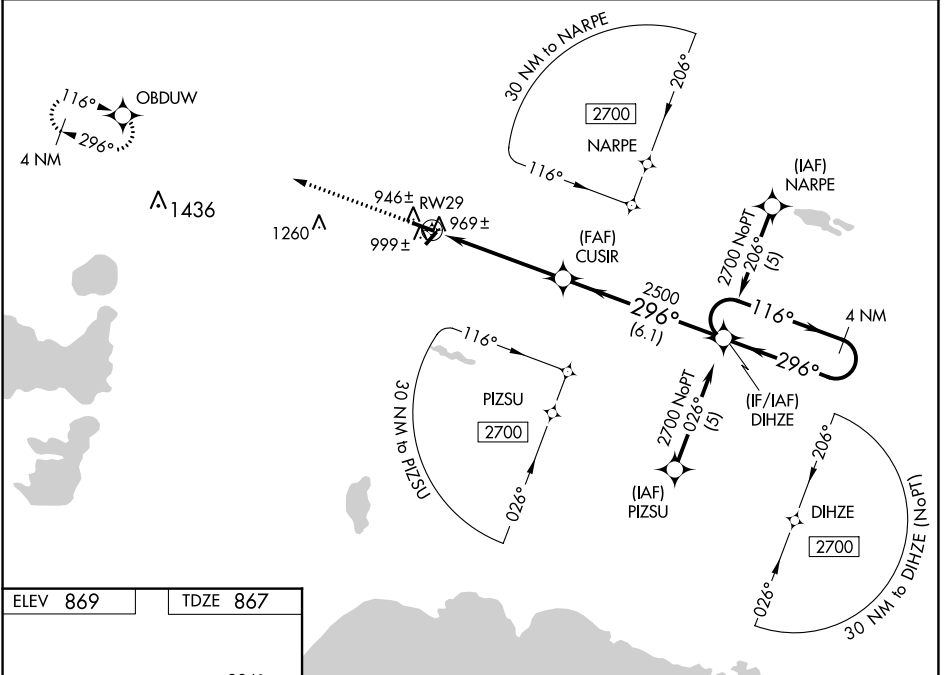
RNAV (GPS) RWY 29

LUCE COUNTY (ERY)

⚠ For uncompensated Baro-VNAV systems, LNAV/VNAV NA below -16°C (4°F) or above 47°C (116°F). DME/DME RNP-0.3 NA. Visibility reduction by helicopters NA. When local altimeter setting not received, use Chippewa Co Intl altimeter setting and increase all DA 105 feet and all MDA 120 feet, increase LPV and LNAV/VNAV visibility ¼ mile all Cats, LNAV Cats C and D ½ mile, and Circling Cat D ¼ mile. Baro-VNAV NA when using Chippewa Co Intl altimeter setting.

MISSED APPROACH:
Climb to 2700 direct
OBDUW and hold.

AWOS-3 119.525	MINNEAPOLIS CENTER 134.6 354.05	UNICOM 122.8 (CTAF) 0
--------------------------	---	---------------------------------



CATEGORY	A	B	C	D
LPV DA	1117-1 250 (300-1)			
LNAV/VNAV DA	1239-1½ 372 (400-1½)			
LNAV MDA	1260-1 393 (400-1)			1260-1¼ 393 (400-1¼)
CIRCLING	1300-1 431 (500-1)	1320-1 451 (500-1)	1320-1½ 451 (500-1½)	1420-2 551 (600-2)

EC-1, 30 DEC 2021 to 27 JAN 2022

EC-1, 30 DEC 2021 to 27 JAN 2022