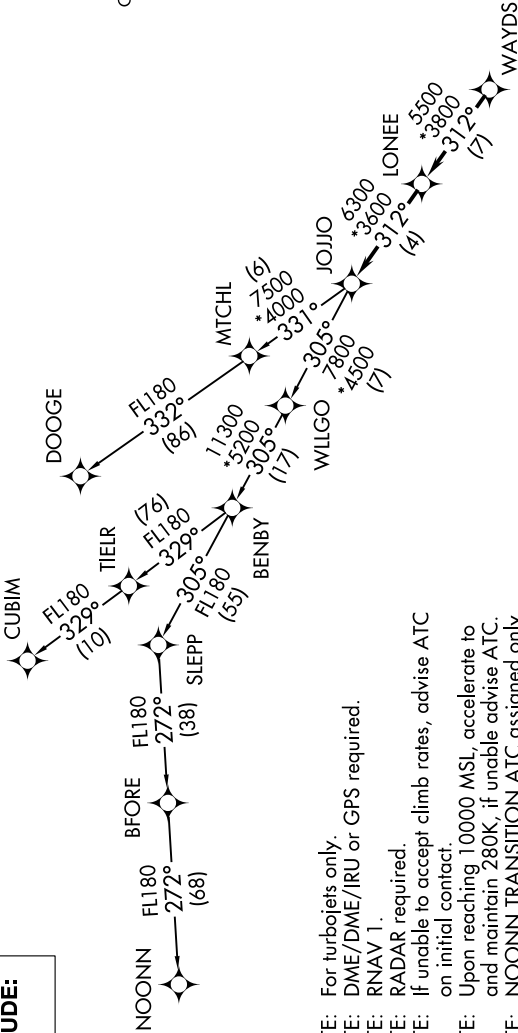


# JOJO FOUR DEPARTURE (RNAV)

LANCASTER COUNTY-MC WHIRTER FIELD (LKR)  
AL-5853 (FAA) LANCASTER, SOUTH CAROLINA

AWOS-3  
120.825  
GCO  
121.725  
UNICOM (CTAF)  
122.725  
CHARLOTTE DEP CON  
120.05 307.8



- NOTE: For turbojets only.
- NOTE: DME/DME/IRU or GPS required.
- NOTE: RNAV 1.
- NOTE: RADAR required.
- NOTE: If unable to accept climb rates, advise ATC on initial contact.
- NOTE: Upon reaching 10000 MSL, accelerate to and maintain 280K, if unable advise ATC.
- NOTE: NOONN TRANSITION ATC assigned only.

TAKEOFF MINIMUMS  
Rwys 6, 24: Standard.

NOTE: Chart not to scale.

**TOP ALTITUDE:**  
3000

### DEPARTURE ROUTE DESCRIPTION

Climb on heading assigned by ATC, expect RADAR vectors to WAYDS, then on depicted route to JOJO. Then on assigned transition. Maintain 3000, expect clearance to filed altitude within 10 minutes after departure.

- CUBIM TRANSITION (JOJO4.CUBIM)
- DOOGE TRANSITION (JOJO4.DOOGE)
- NOONN TRANSITION (JOJO4.NOONN)

# JOJO FOUR DEPARTURE (RNAV)