

# KNIGHTS TWO DEPARTURE

**TOP ALTITUDE:  
3000**

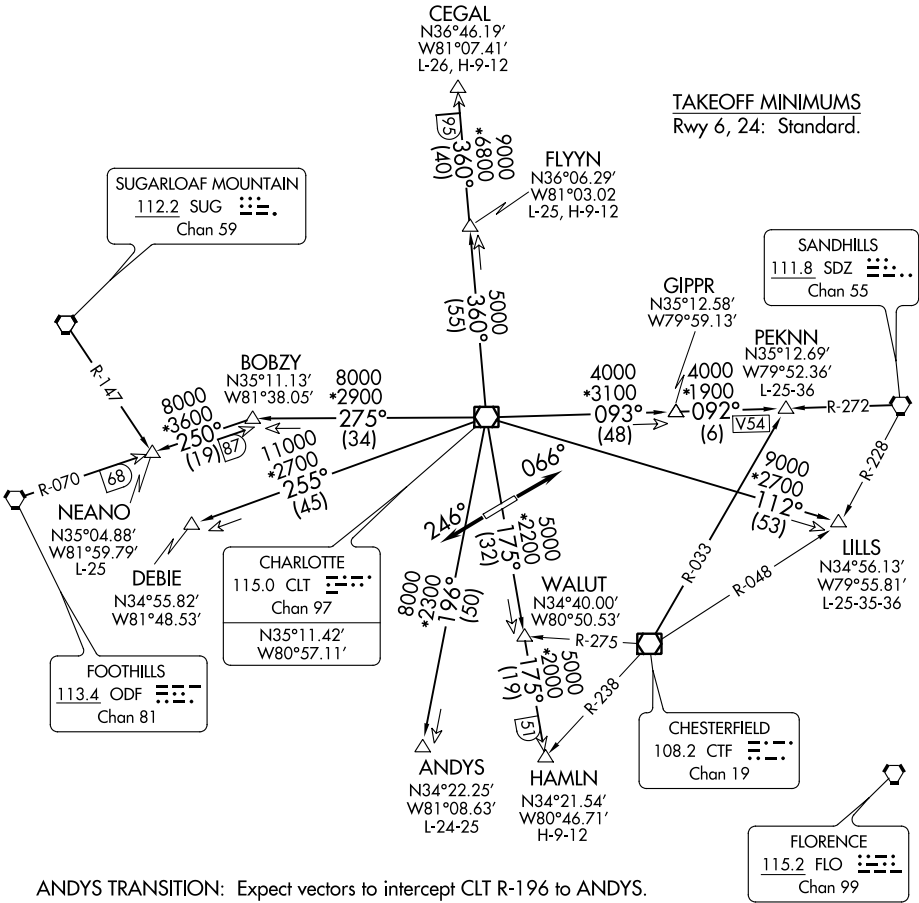
AWOS-3  
120.825  
GCO  
121.725  
UNICOM (CTAF)  
122.725  
CHARLOTTE DEP CON  
120.05 307.8

NOTE: For propeller aircraft only.  
NOTE: RADAR and DME required.  
NOTE: Turboprops: Operate in a manner that will result in best forward speed and climb rate.  
NOTE: Transponder code will be issued via Charlotte clearance delivery.

**TAKEOFF MINIMUMS**  
Rwy 6, 24: Standard.

SE-2, 30 DEC 2021 to 27 JAN 2022

SE-2, 30 DEC 2021 to 27 JAN 2022



ANDYS TRANSITION: Expect vectors to intercept CLT R-196 to ANDYS.  
 CEGAL TRANSITION: Expect vectors to intercept CLT R-360 to CEGAL.  
 DEBIE TRANSITION: Expect vectors to intercept CLT R-255 to DEBIE.  
 FLYYN TRANSITION: Expect vectors to intercept CLT R-360 to FLYYN.  
 HAMLN TRANSITION: Expect vectors to intercept CLT R-175 to HAMLN.  
 LILLS TRANSITION: Expect vectors to intercept CLT R-112 to LILLS.  
 NEANO TRANSITION: Expect vectors to intercept CLT R-275 to BOBZY then ODF R-070 to NEANO.  
 PEKNN TRANSITION: Expect vectors to intercept CLT R-093 to GIPPR then SDZ R-272 to PEKNN.

(NARRATIVE ON FOLLOWING PAGE)

NOTE: Chart not to scale.

# KNIGHTS TWO DEPARTURE