

(KWEEN4.KWEEN) 19003

AL-5853 (FAA)

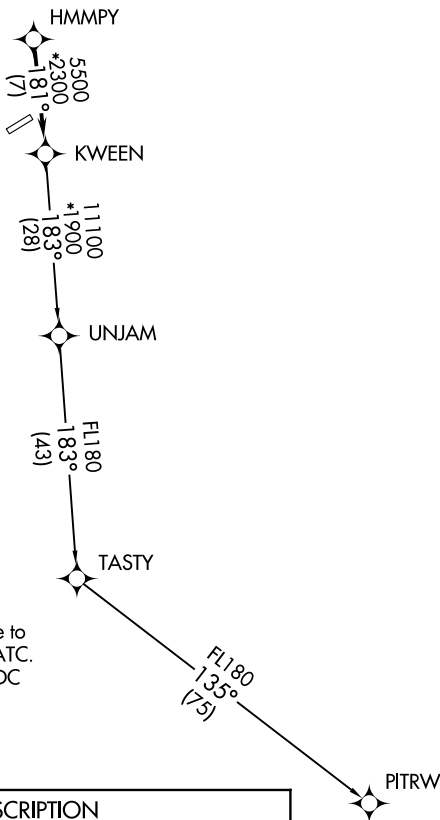
# KWEEN FOUR DEPARTURE (RNAV)

LANCASTER COUNTY-MC WHIRTER FIELD (LKR)  
LANCASTER, SOUTH CAROLINA

AWOS-3  
120.825  
GCO  
121.725  
UNICOM  
122.725 (CTAF)  
CHARLOTTE DEP CON  
120.05 307.8

**TOP ALTITUDE:  
3000**

TAKEOFF MINIMUMS  
Rwys 6, 24: Standard.



- NOTE: For turbojets only.
- NOTE: DME/DME/IRU or GPS required.
- NOTE: RNAV 1.
- NOTE: RADAR required.
- NOTE: If unable to accept climb rates, advise ATC on initial contact.
- NOTE: Upon reaching 10000 MSL, accelerate to and maintain 280K, if unable advise ATC.
- NOTE: Transponder code will be issued via PDC or Charlotte CLNC DEL.

NOTE: Chart not to scale.

**DEPARTURE ROUTE DESCRIPTION**

Climb on heading assigned by ATC, expect RADAR vectors to HMMPY, then on track 181° to KWEEN, then on assigned transition, maintain 3000, expect filed altitude within 10 minutes after departure.

PITRW TRANSITION (KWEEN4.PITRW)  
UNJAM TRANSITION (KWEEN4.UNJAM)

**KWEEN FOUR DEPARTURE (RNAV)**  
(KWEEN4.KWEEN) 03JAN19

LANCASTER, SOUTH CAROLINA  
LANCASTER COUNTY-MC WHIRTER FIELD (LKR)

SE-2, 30 DEC 2021 to 27 JAN 2022

SE-2, 30 DEC 2021 to 27 JAN 2022