

NDB LKR 400	APP CRS 251°	Rwy Idg 6004
		TDZE 486
		Apt Elev 486

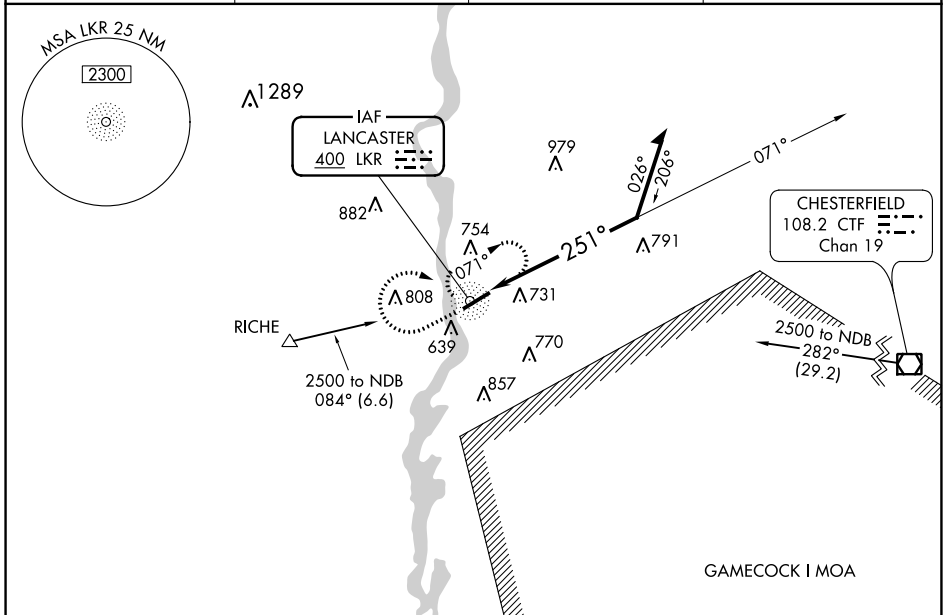
NDB RWY 24

LANCASTER COUNTY-MC WHIRTER FIELD (LKR)

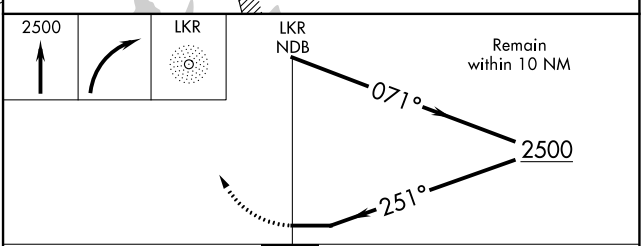
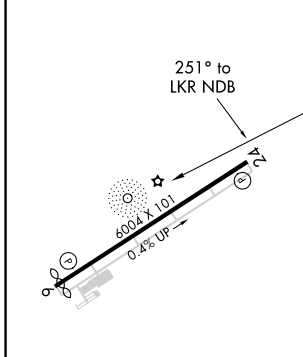
NA When VGSI inoperative, Straight-in/Circling Rwy 24 procedure NA at night. Visibility reduction by helicopters NA. When local altimeter setting not received, use Rock Hill altimeter setting and increase all MDA 80 feet, and increase S-24 Cats B, C, and D and Circling Cats B, C, and D visibility ¼ mile.

MISSED APPROACH: Climb to 2500 then right turn direct LKR NDB and hold.

AWOS-3 120.825	CHARLOTTE APP CON 120.05 307.8	GCO 121.725	UNICOM 122.725 (CTAF) 0
--------------------------	--	-----------------------	-----------------------------------



ELEV	486	TDZE	486
------	-----	------	-----



CATEGORY	A	B	C	D
S-24	1160-1 674 (700-1)		1160-2 674 (700-2)	1160-2½ 674 (700-2½)
CIRCLING	1160-1 674 (700-1)		1160-2 674 (700-2)	1160-2½ 674 (700-2½)

MIRL Rwy 6-24 0
REIL Rws 6 and 24 0

NDB RWY 24

SE-2, 30 DEC 2021 to 27 JAN 2022

SE-2, 30 DEC 2021 to 27 JAN 2022