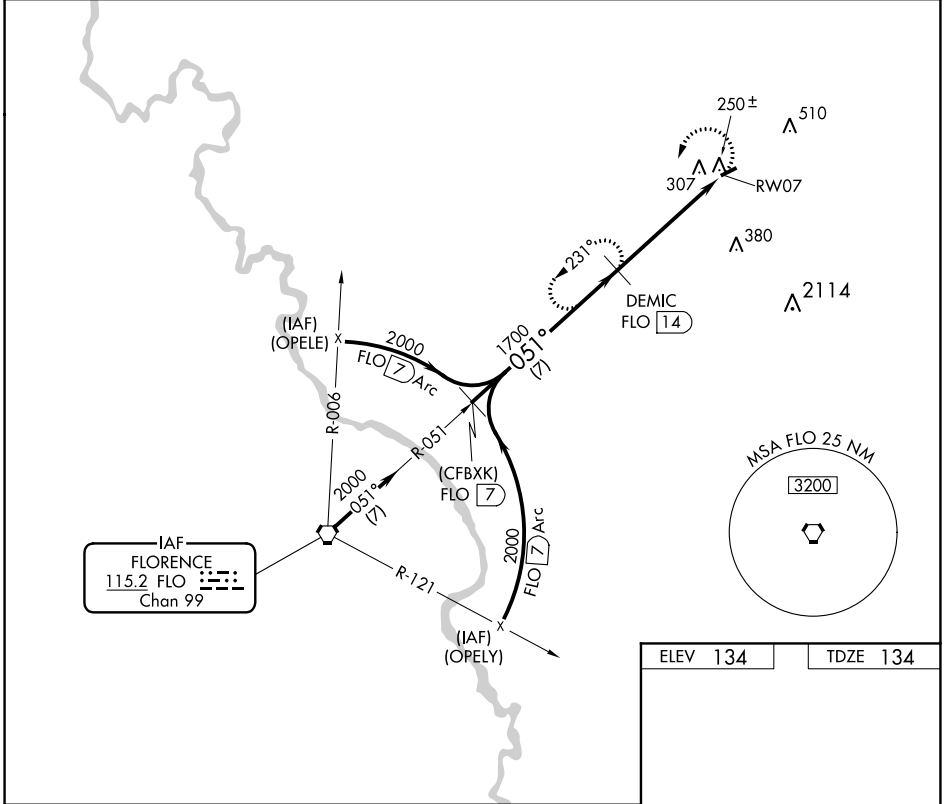


VORTAC FLO <b>115.2</b> Chan <b>99</b>	APP CRS <b>051°</b>	Rwy Idg <b>3000</b> TDZE <b>134</b> Apt Elev <b>134</b>
--	------------------------	---

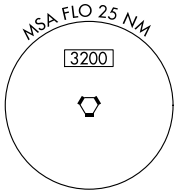
# VOR/DME or GPS RWY 7

DILLON COUNTY (D.L.C)

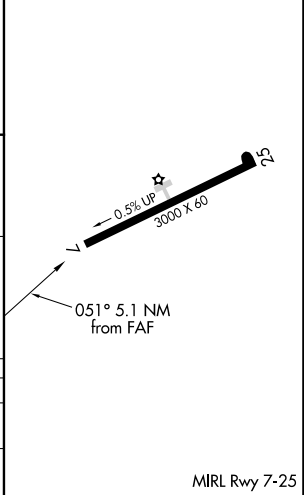
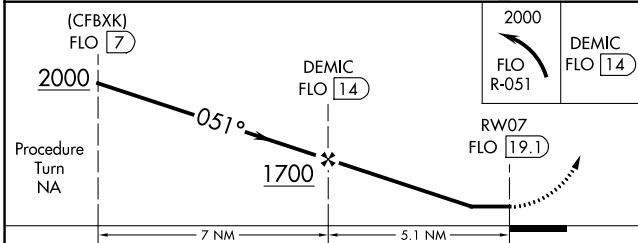
<p>▼ ▲NA</p> <p>Use Florence altimeter setting.</p>	<p>MISSED APPROACH: Climbing left turn to 2000 via FLO R-051 to DEMIC 14 DME and hold.</p>
<p>FLORENCE APP CON ★</p> <p><b>118.6 341.7</b></p>	<p>CTAF</p> <p><b>122.9</b></p>



IAF  
FLORENCE  
115.2 FLO  
Chan 99



ELEV 134	TDZE 134
----------	----------



CATEGORY	A	B	C	D
S-7	660-1	526 (600-1)	660-1½ 526 (600-1½)	NA
CIRCLING	700-1	566 (600-1)	700-1½ 566 (600-1½)	NA

SE-2, 30 DEC 2021 to 27 JAN 2022

SE-2, 30 DEC 2021 to 27 JAN 2022