

VOR/DME BAE <b>116.4</b> Chan <b>111</b>	APP CRS <b>180°</b>	Rwy ldg TDZE Apt Elev <b>N/A</b> <b>N/A</b> <b>780</b>
--	------------------------	---

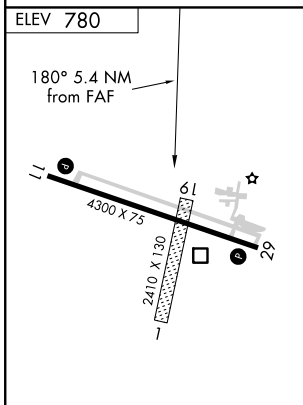
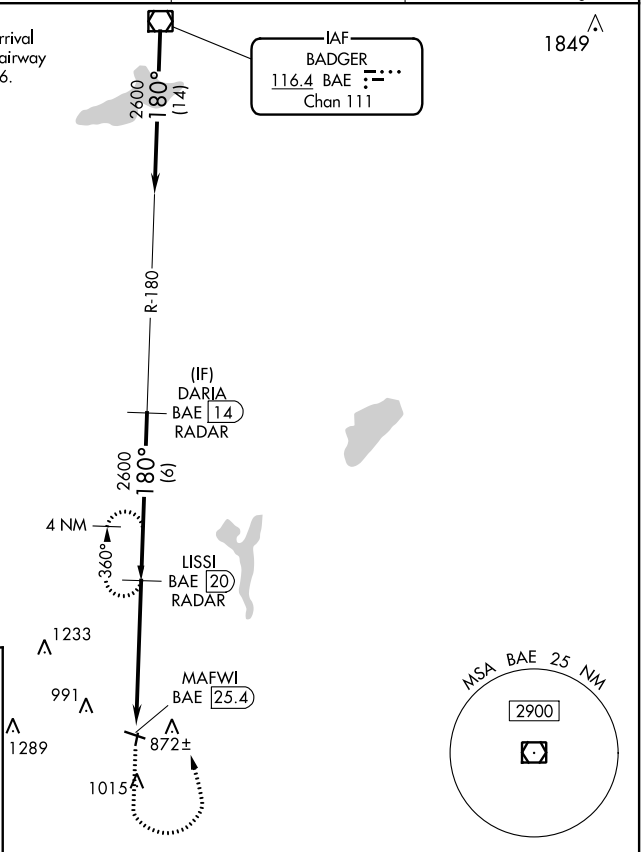
# VOR-A

BURLINGTON MUNI (BUU)

DME or RADAR required.	MISSED APPROACH: Climb to 2600 then left turn on BAE VOR/DME R-180 to LISSI/20 DME/RADAR and hold.
------------------------	---

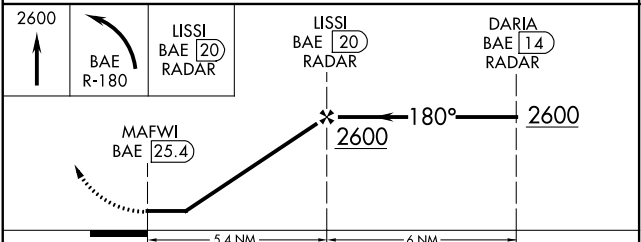
AWOS-3 <b>125.275</b>	MILWAUKEE APP CON <b>135.875 307.0</b>	GCO <b>121.725</b>	UNICOM <b>123.05 (CTAF) 0</b>
--------------------------	---	-----------------------	----------------------------------

Procedure NA for arrival on BAE VOR/DME airway radials 119 CW 226.



MIRL Rwy 11-29  
REIL Rwys 11 and 29

FAF to MAP 5.4 NM					
Knots	60	90	120	150	180
Min:Sec	5:24	3:36	2:42	2:10	1:48



CATEGORY	A	B	C	D
<b>C</b> CIRCLING	1400-1	620 (700-1)	1400-1 <sup>3</sup> / <sub>4</sub> 620 (700-1 <sup>3</sup> / <sub>4</sub> )	1560-2 <sup>1</sup> / <sub>2</sub> 780 (800-2 <sup>1</sup> / <sub>2</sub> )

# VOR-A

EC-3, 30 DEC 2021 to 27 JAN 2022

EC-3, 30 DEC 2021 to 27 JAN 2022