

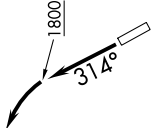
SC-2, 30 DEC 2021 to 27 JAN 2022

CTAF
122.7
REGIONAL DEP CON
125.2 343.65

TAKEOFF MINIMUMS

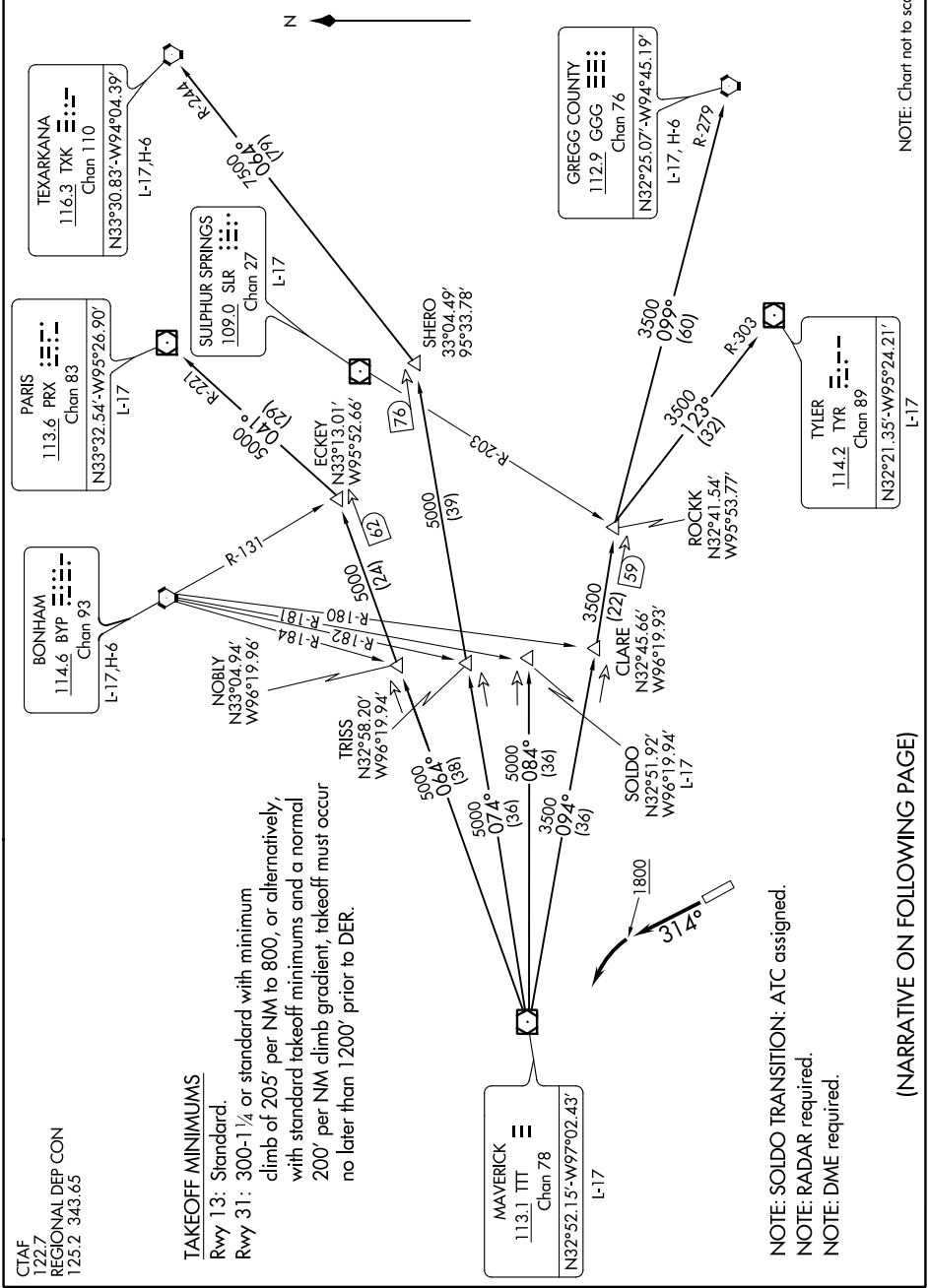
Rwy 13: Standard.
Rwy 31: 300-1 1/4 or standard with minimum climb of 205' per NM to 800, or alternatively, with standard takeoff minimums and a normal 200' per NM climb gradient, takeoff must occur no later than 1200' prior to DER.

MAVERICK
113.1 TTT
Chan 78
N32°52.15'-W97°02.43'
L-17



NOTE: SOLDO TRANSITION: ATC assigned.
NOTE: RADAR required.
NOTE: DME required.

(NARRATIVE ON FOLLOWING PAGE)



NOTE: Chart not to scale.

SC-2, 30 DEC 2021 to 27 JAN 2022