


JOE POOL THREE DEPARTURE


TAKEOFF MINIMUMS

Rwy 13: Standard.

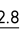
Rwy 31: 300-1/4 or standard with minimum climb of 205' per NM to 800, or alternatively, with standard takeoff minimums and a normal 200' per NM climb gradient, takeoff must occur no later than 1200' prior to DER.

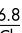
CTAF
122.7
REGIONAL DEP CON
125.2 343.65

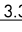
MAVERICK
113.1 TTT 
Chan 78
N32°52.15'
W97°02.43'

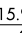
WACO
115.3 ACT 
Chan 100
N31°39.73'
W97°16.14'
L-19, H-6

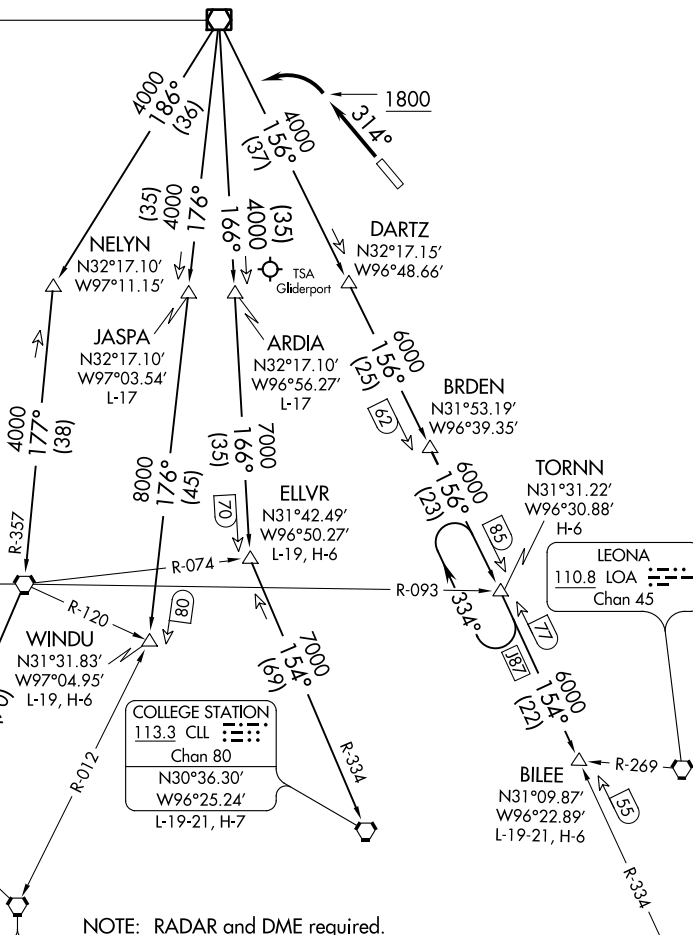
HOARY
N30°34.63'
W97°46.52'
L-19-21, H-7

CENTEX
112.8 CWK 
Chan 75

SAN ANTONIO
116.8 SAT 
Chan 115
N29°38.64'-W98°27.68'
L-19, H-7

COLLEGE STATION
113.3 CLL 
Chan 80
N30°36.30'
W96°25.24'
L-19-21, H-7

NAVASOTA
115.9 TNV 
Chan 106



NOTE: RADAR and DME required.

(NARRATIVE ON FOLLOWING PAGE)

NOTE: Chart not to scale.

SC-2, 30 DEC 2021 to 27 JAN 2022

SC-2, 30 DEC 2021 to 27 JAN 2022

JOE POOL THREE DEPARTURE