

# KINGDOM ONE DEPARTURE

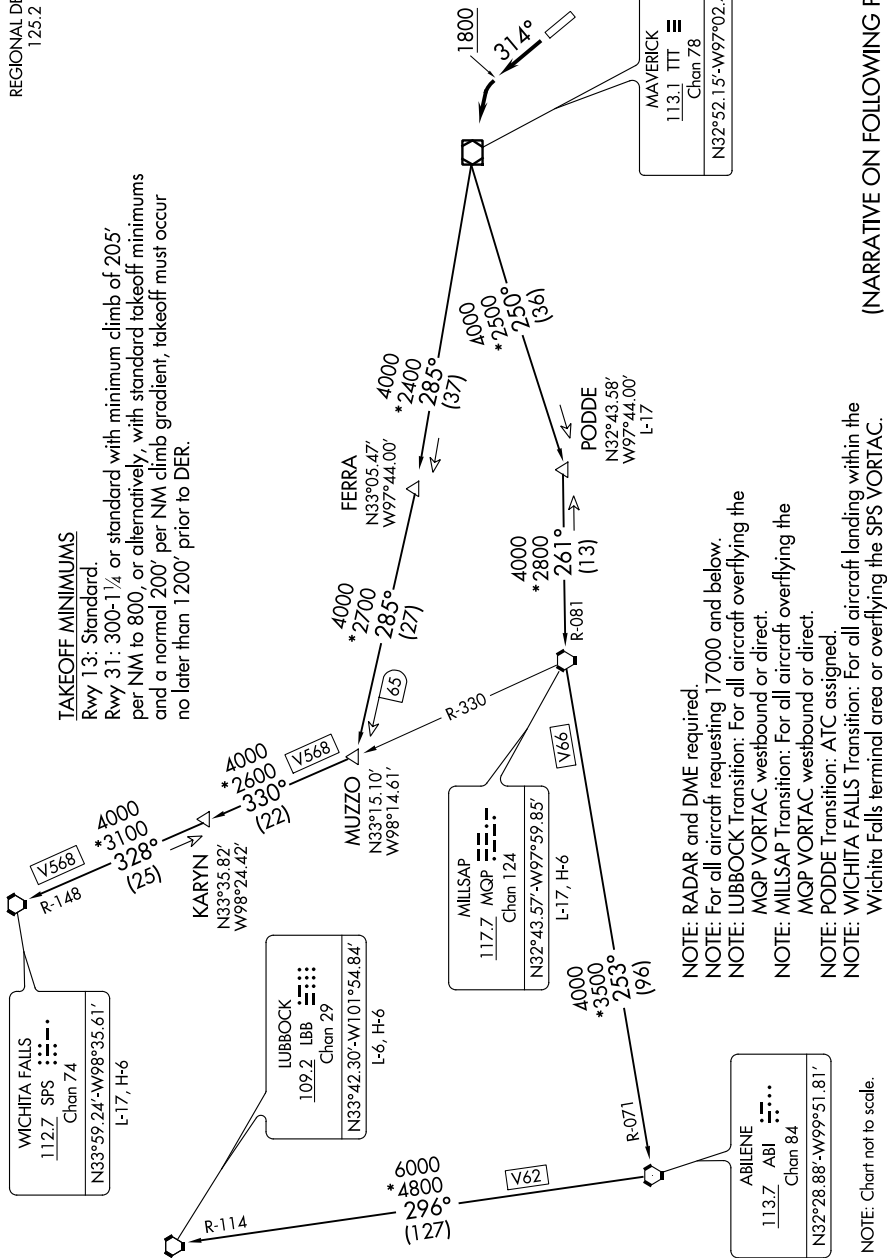
CTAF  
122.7  
REGIONAL DEP CON  
125.2 343.65



### TAKEOFF MINIMUMS

Rwy 13: Standard.

Rwy 31: 300-1/4 or standard with minimum climb of 205' per NM to 800, or alternatively, with standard takeoff minimums and a normal 200' per NM climb gradient, takeoff must occur no later than 1200' prior to DER.



- NOTE: RADAR and DME required.
- NOTE: For all aircraft requesting 17000 and below.
- NOTE: LUBBOCK Transition: For all aircraft overflying the MGP VORTAC westbound or direct.
- NOTE: MILLSAP Transition: For all aircraft overflying the MGP VORTAC westbound or direct.
- NOTE: PODDE Transition: ATC assigned.
- NOTE: WICHITA FALLS Transition: For all aircraft landing within the Wichita Falls terminal area or overflying the SPS VORTAC.

(NARRATIVE ON FOLLOWING PAGE)

SC-2, 30 DEC 2021 to 27 JAN 2022

SC-2, 30 DEC 2021 to 27 JAN 2022

# KINGDOM ONE DEPARTURE

NOTE: Chart not to scale.