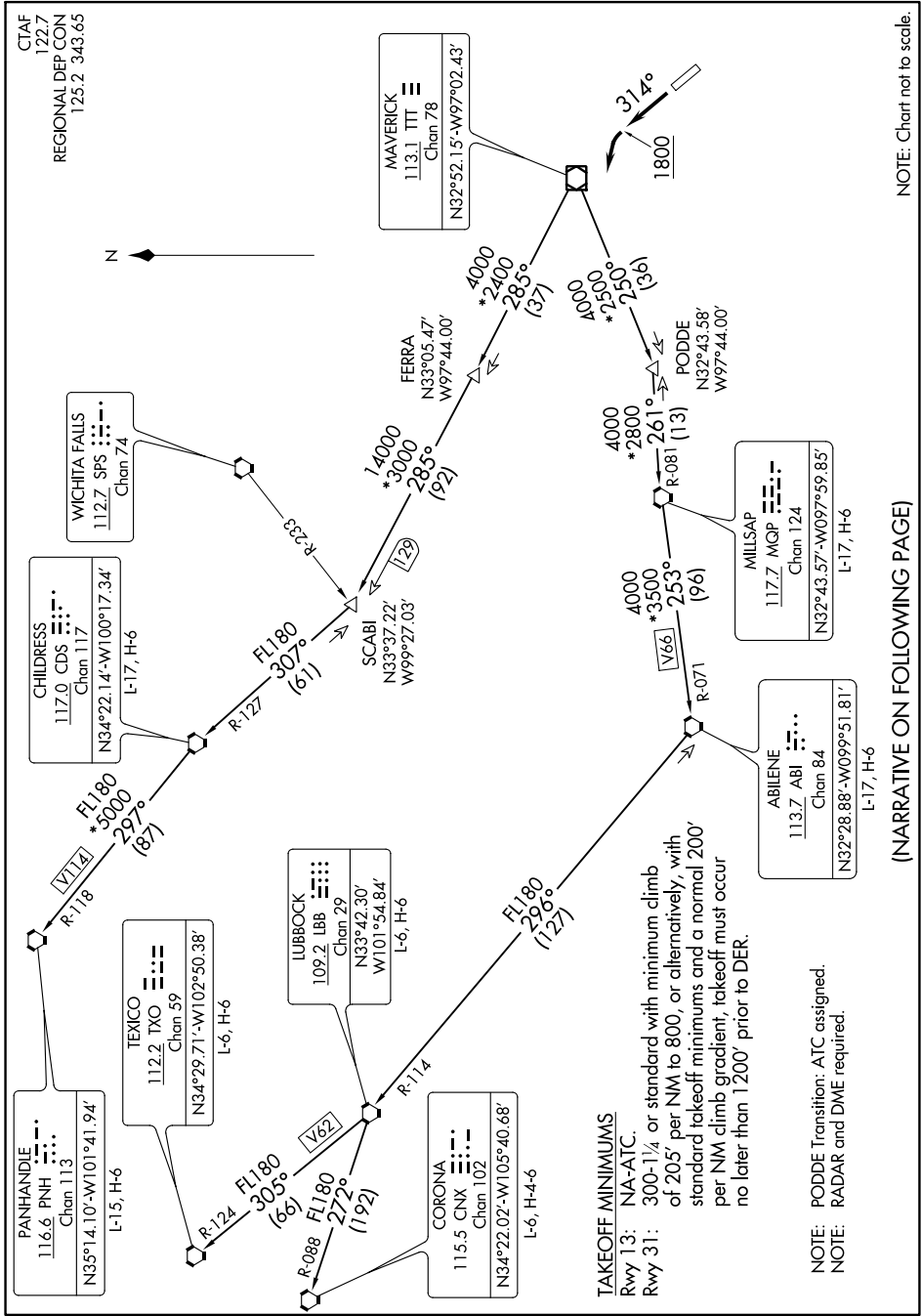


# WORTH SEVEN DEPARTURE



NOTE: Chart not to scale.

SC-2, 30 DEC 2021 to 27 JAN 2022

SC-2, 30 DEC 2021 to 27 JAN 2022

(NARRATIVE ON FOLLOWING PAGE)

**TAKEOFF MINIMUMS**  
 Rwy 13: NA-ATC.  
 Rwy 31: 300-1/4 or standard with minimum climb of 205' per NM to 800, or alternatively, with standard takeoff minimums and a normal 200' per NM climb gradient; takeoff must occur no later than 1200' prior to DER.

NOTE: PODDE Transition: ATC assigned.  
 NOTE: RADAR and DME required.

# WORTH SEVEN DEPARTURE