


| | | | |
|----------------|-------------|----------|-------------|
| LOC/DME I-RLD | APP CRS | Rwy Idg | 4009 |
| 110.5 | 189° | TDZE | 390 |
| Chan 42 | | Apt Elev | 394 |

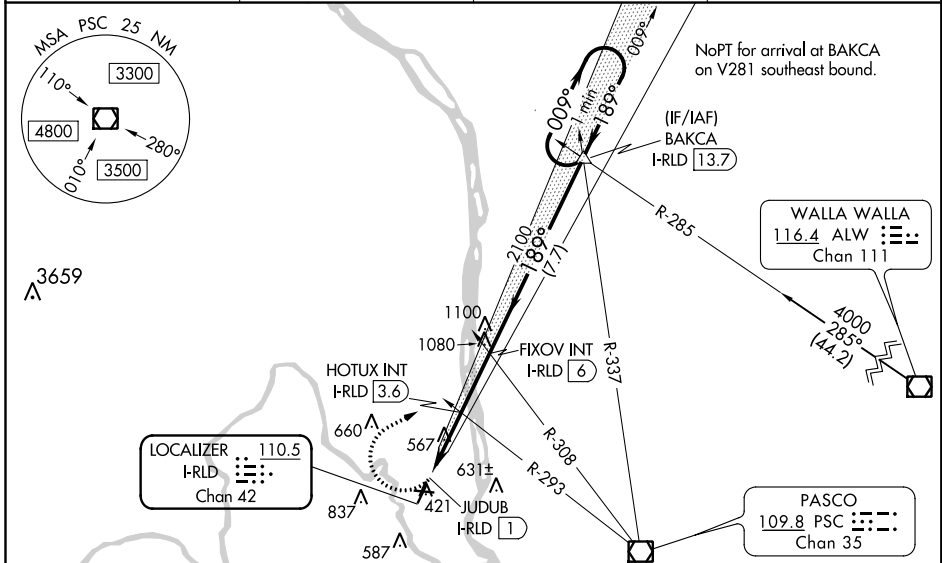
LOC RWY 19

RICHLAND (R.LD)

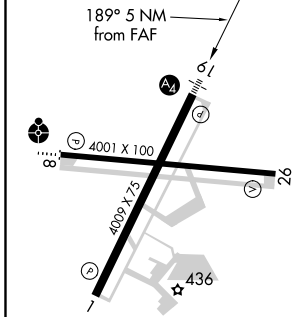
NA VDP NA with Pasco altimeter setting. When local altimeter setting not received, use Pasco altimeter setting and increase HOTUX FIX minimums S-19 Cats C and D $\frac{1}{8}$ mile and Circling Cat C $\frac{1}{4}$ mile. For inop MALS when using Pasco altimeter setting, HOTUX FIX minimums increase S-19 Cats C and D visibility $\frac{3}{8}$ mile. Inop table does not apply to S-19 Cat C. Helicopter visibility reduction below $\frac{3}{4}$ SM NA. For inop MALS increase HOTUX FIX minimums S-19 Cat D visibility $\frac{1}{4}$ mile. Inop table does not apply to S-19 Cat C when using Pasco altimeter setting.

MALS

MISSED APPROACH: Climbing right turn to 4000 on heading 045° and on PSC VOR/DME R-337 to BAKCA INT/I-RLD 13.7 DME and hold, continue climb-in-hold to 4000.

| | | | |
|----------------------------|--|--------------------------|---------------------------------|
| AWOS-3PT 132.675 | CHINOOK APP CON ★ 128.75 377.2 | CLNC DEL 122.4 | UNICOM 122.7 (CTAF) 0 |
|----------------------------|--|--------------------------|---------------------------------|



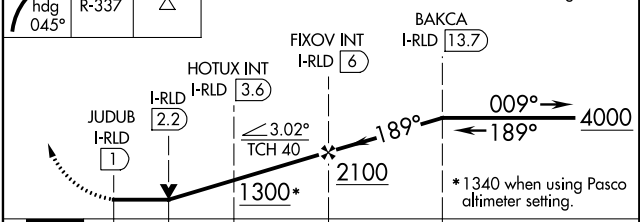
ELEV 394 | TDZE 390 | 4000 | BAKCA | VGSI and descent angles not coincident (VGSI Angle 3.00/TCH 30). | One Minute Holding Pattern



REIL Rwy 1 and 19
 MRL Rwy 1-19
 MRL Rwy 8-26

FAF to MAP 5 NM

| | | | | | |
|---------|------|------|------|------|------|
| Knots | 60 | 90 | 120 | 150 | 180 |
| Min:Sec | 5:00 | 3:20 | 2:30 | 2:00 | 1:40 |



| CATEGORY | A | B | C | D |
|---|----------------------|-----------------------|--------------------------|-------------------------|
| S-19 | 1300-1 | 910 (1000-1) | 1300-2½ | 910 (1000-2½) |
| C CIRCLING | 1300-1¼ | 906 (1000-1¼) | 1300-2¾ 906 (1000-2¾) | 1940-3 1546 (1600-3) |
| HOTUX FIX MINIMUMS (DUAL VOR RECEIVERS OR DME REQUIRED) | | | | |
| S-19 | 880-¾ | 490 (500-¾) | 880-1⅛ | 490 (500-1⅛) |
| C CIRCLING | 920-1 526 (600-1) | 1000-1 606 (700-1) | 1200-2¼ 806 (900-2¼) | 1940-3 1546 (1600-3) |

NW-1, 30 DEC 2021 to 27 JAN 2022

NW-1, 30 DEC 2021 to 27 JAN 2022