

WAAS CH 77903 W26A	APP CRS 259°	Rwy Idg TDZE Apt Elev	4001 389 394
--	------------------------	-----------------------------	---

RNAV (GPS) RWY 26

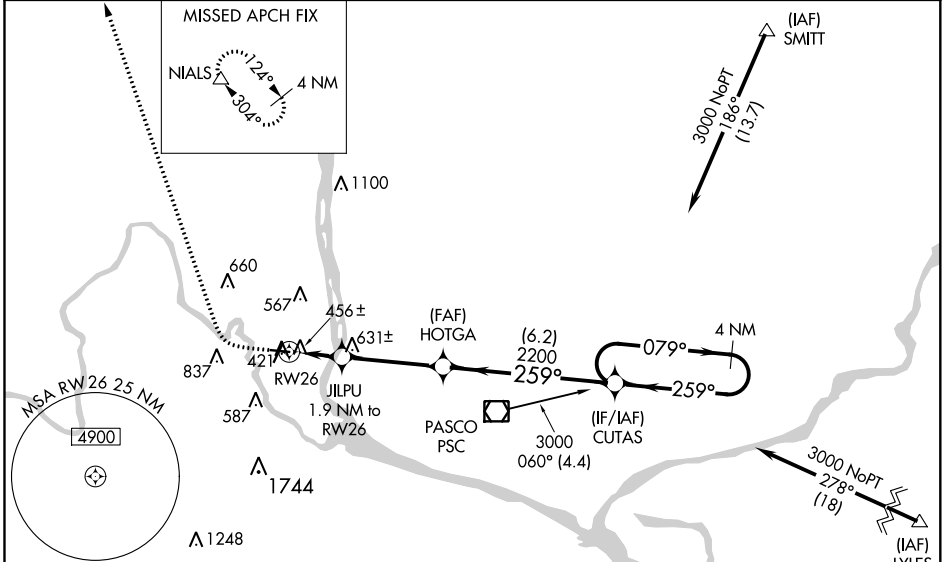
RICHLAND (R.LD)

RNP APCH.

NA When local altimeter setting not received, use Pasco altimeter setting and increase all DA 21 feet and all MDA 40 feet and increase LNAV/VNAV Cats A and B visibility ½ mile, Circling Cat C visibility ¼ mile. Baro-VNAV NA when using Pasco altimeter setting. For uncompensated Baro-VNAV systems, LNAV/VNAV NA below -15°C (4°F) or above 41°C (107°F). Rwy 26 helicopter visibility reduction below ¾ SM NA.

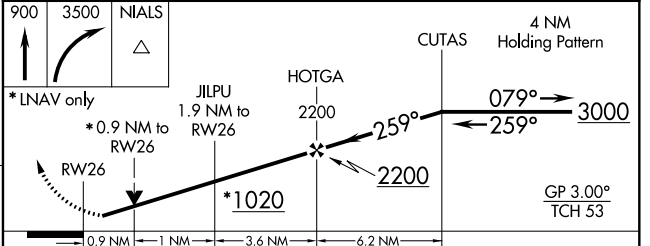
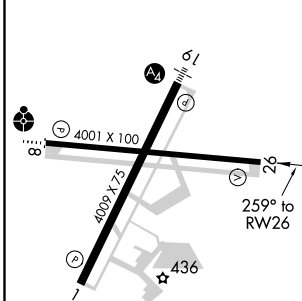
MISSED APPROACH: Climb to 900 then climbing right turn to 3500 direct NIALS and hold.

AWOS-3PT 132.675	CHINOOK APP CON* 128.75 377.2	CLNC DEL 122.4	UNICOM 122.7 (CTAF) 0
----------------------------	---	--------------------------	---------------------------------



ELEV 394	TDZE 389
----------	----------

Procedure NA for arrivals at PSC VOR/DME on V187 southwest bound and on V281 southeast bound.



CATEGORY	A	B	C	D
LPV DA	657-7/8	268 (300-7/8)	657-1	268 (300-1)
LNAV/VNAV DA	639-3/4	250 (300-3/4)	639-1	250 (300-1)
LNAV MDA	720-1 331 (400-1)			
C CIRCLING	920-1 526 (600-1)	1000-1 606 (700-1)	1200-2 1/4 806 (700-2 1/4)	1940-3 1546 (1600-3)

REIL Rwy 1 and 19 0
MIRL Rwy 1-19 0
MIRL Rwy 8-26

NW-1, 30 DEC 2021 to 27 JAN 2022

NW-1, 30 DEC 2021 to 27 JAN 2022