

APP CRS	Rwy Idg	<b>4009</b>
<b>189°</b>	TDZE	<b>390</b>
	Apt Elev	<b>394</b>

# RNAV (GPS) Y RWY 19

RICHLAND (R.LD)

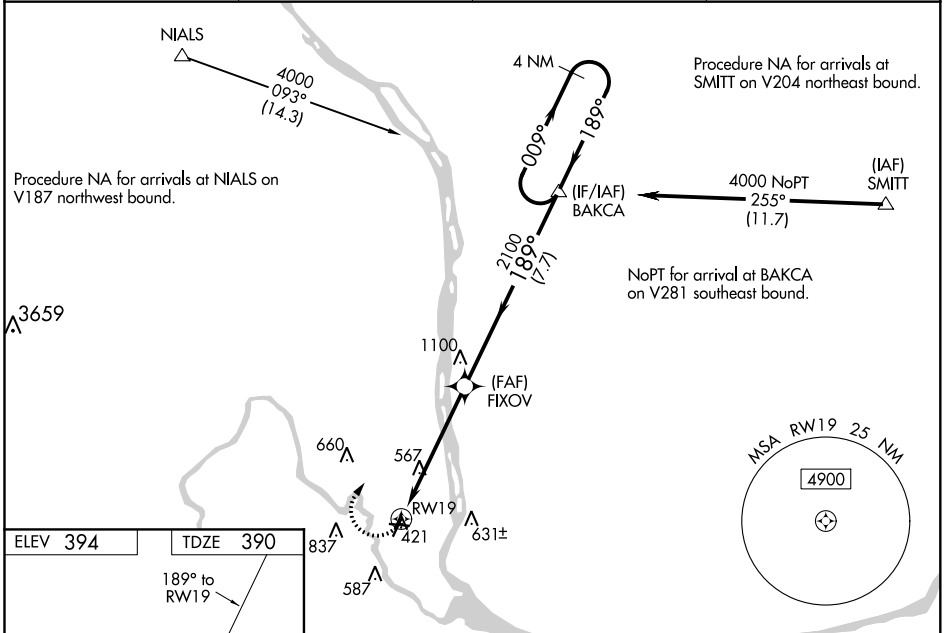
**NA** For uncompensated Baro-VNAV systems, LNAV/VNAV NA below -15°C (4°F) or above 41°C (106°F). DME/DME RNP-0.3 NA. When local altimeter setting not received, use Pasco altimeter setting and increase all DA 21 feet and all MDA 40 feet and increase LNAV Cat A visibility ¼ mile, Cat C and D ½ mile, and Circling Cat C visibility ¼ mile. For inop MALS increase LNAV/VNAV Cat D visibility to 1½ mile, LNAV Cat C and D visibility to 2½ mile. When using Pasco altimeter setting increase LNAV/VNAV all Cats visibility to 1¼ mile, LNAV Cat C and D visibility to 2½ mile. VDP and Baro-VNAV NA when using Pasco altimeter setting. Helicopter visibility reduction below ¾ SM NA.

MALS



**MISSED APPROACH:** Climbing right turn 4000 direct BAKCA and hold, continue climb-in-hold to 4000.

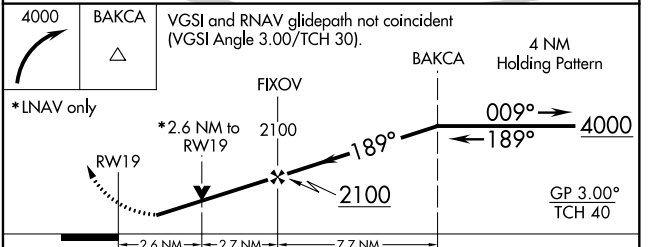
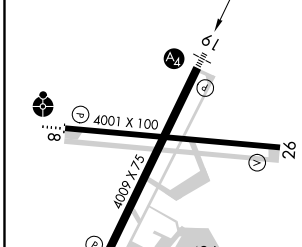
AWOS-3PT <b>132.675</b>	CHINOOK APP CON ★ <b>128.75 377.2</b>	CLNC DEL <b>122.4</b>	UNICOM <b>122.7 (CTAF) 0</b>
----------------------------	--	--------------------------	---------------------------------



NW-1, 30 DEC 2021 to 27 JAN 2022

NW-1, 30 DEC 2021 to 27 JAN 2022

ELEV 394	TDZE 390
----------	----------



CATEGORY	A	B	C	D
LNAV/VNAV DA	861-1 <sup>3</sup> / <sub>8</sub> 471 (500-1 <sup>3</sup> / <sub>8</sub> )			
LNAV MDA	1240- <sup>3</sup> / <sub>4</sub> 850 (900- <sup>3</sup> / <sub>4</sub> )	1240-1 850 (900-1)	1240-2	850 (900-2)
<b>C</b> CIRCLING	1240-1 <sup>1</sup> / <sub>4</sub>	846 (900-1 <sup>1</sup> / <sub>4</sub> )	1240-2 <sup>1</sup> / <sub>2</sub> 846 (900-2 <sup>1</sup> / <sub>2</sub> )	1940-3 1546 (1600-3)

REIL Rws 1 and 19 **0**  
MIRL Rwy 1-19 **0**  
MIRL Rwy 8-26