

WAAS CH 82124 W01A	APP CRS 013°	Rwy Idg TDZE Apt Elev	5000 817 817
---------------------------------	------------------------	-----------------------------	---

RNAV (GPS) RWY 1

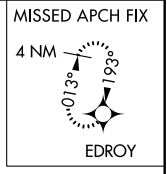
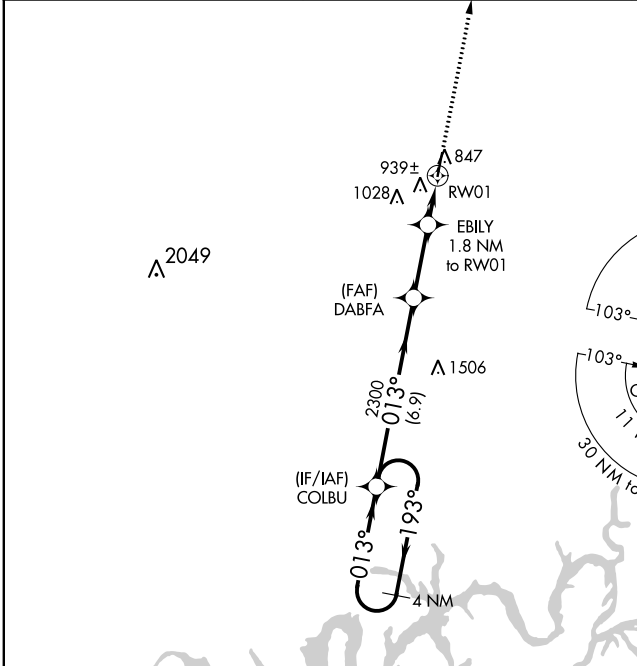
PORTLAND MUNI (1M5)

RNP APCH.

⚠ Baro-VNAV NA when using Bowling Green altimeter setting. For uncompensated Baro-VNAV systems, LNAV/VNAV NA below -16°C or above 54°C. Rwy 1 helicopter visibility reduction below 3/4 SM NA. When local altimeter setting not received, use Bowling Green altimeter setting and increase LPV DA to 1180 and all visibilities 1/8 mile; increase all LNAV/VNAV DA to 1210 and all visibilities 1/4 mile; increase all MDA 100 feet and increase LNAV Cats C/D visibility 1/4 mile.

MISSED APPROACH: Climb to 3000 direct EDROY and hold.

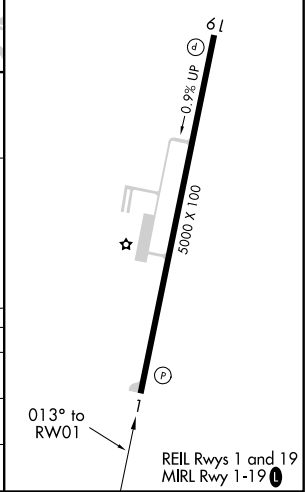
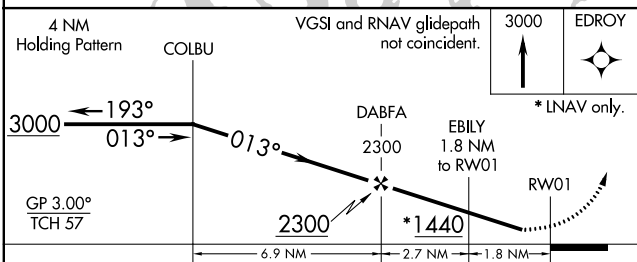
AWOS-3 118.175	NASHVILLE APP CON 119.35 372.0	UNICOM 122.8 (CTAF) 0
--------------------------	--	---------------------------------



SE-1, 30 DEC 2021 to 27 JAN 2022

SE-1, 30 DEC 2021 to 27 JAN 2022

ELEV 817	TDZE 817
----------	----------



CATEGORY	A	B	C	D
LPV DA		1090-1	273 (300-1)	
LNAV/VNAV DA		1120-1	303 (400-1)	
LNAV MDA	1200-1	383 (400-1)	1200-1 1/8	383 (400-1 1/8)