

WAAS CH 42818 W25A	APP CRS 246°	Rwy ldg 5003 TDZE 147 Apt Elev 147
--	------------------------	---

RNAV (GPS) RWY 25

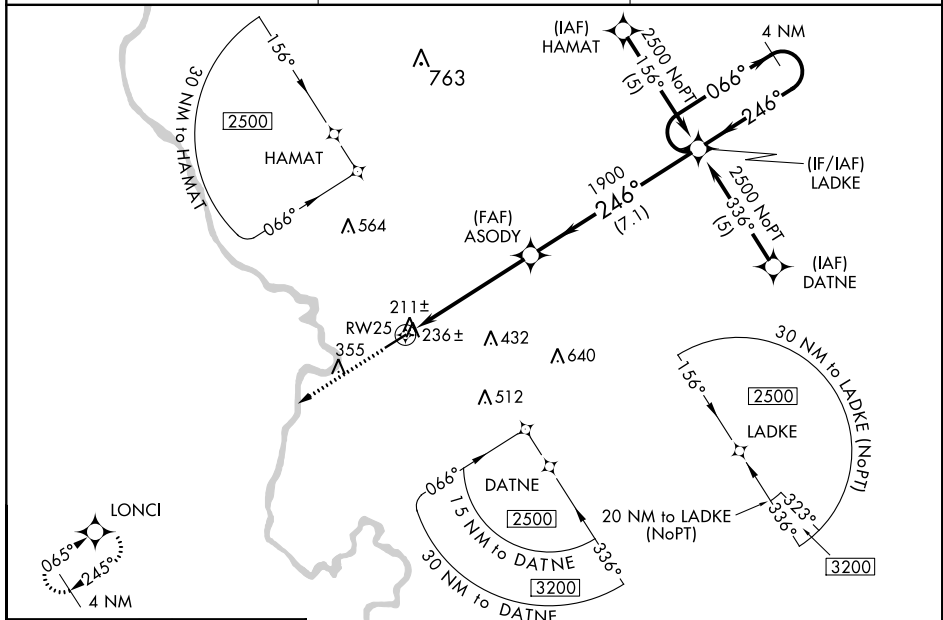
MARLBORO COUNTY JETPORT-H E AVENT FIELD (BBP)

RNP APCH.

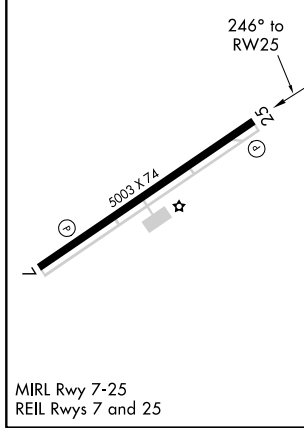
▼ Baro-VNAV NA when using Florence altimeter setting. For uncompensated Baro-VNAV systems, LNAV/VNAV NA below -15°C or above 47°C. Rwy 25 helicopter visibility reduction below ¾ SM NA. When local altimeter setting not received, use Florence altimeter setting and increase all DA 61 feet and MDA 80 feet. Increase LPV all Cats, and LNAV Cat C and D visibility ¼ mile.

MISSED APPROACH: Climb to 2500 direct LONCI and hold.

AWOS-3PT 123.825	FLORENCE APP CON * 118.6 341.7	UNICOM 122.8 (CTAF)
----------------------------	--	-------------------------------



ELEV 147	TDZE 147
----------	----------



2500	LONCI	VGSI and descent angles not coincident (VGSI Angle 3.00/TCH 40).	4 NM Holding Pattern
ASODY	LADKE	066° → 2500	GP 3.00° TCH 52
→ 246° ←	→ 066° ←	→ 246° ←	
5.3 NM	7.1 NM		

CATEGORY	A	B	C	D
LPV DA		441-1	294 (300-1)	
LNAV/VNAV DA		621-1¾	474 (500-1¾)	
LNAV MDA	680-1	533 (600-1)	680-1½ 533 (600-1½)	680-1¾ 533 (600-1¾)

SE-2, 30 DEC 2021 to 27 JAN 2022

SE-2, 30 DEC 2021 to 27 JAN 2022