

APP CRS	Rwy Idg	5002
220°	TDZE	755
	Apt Elev	757

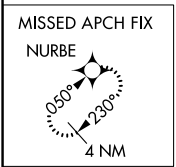
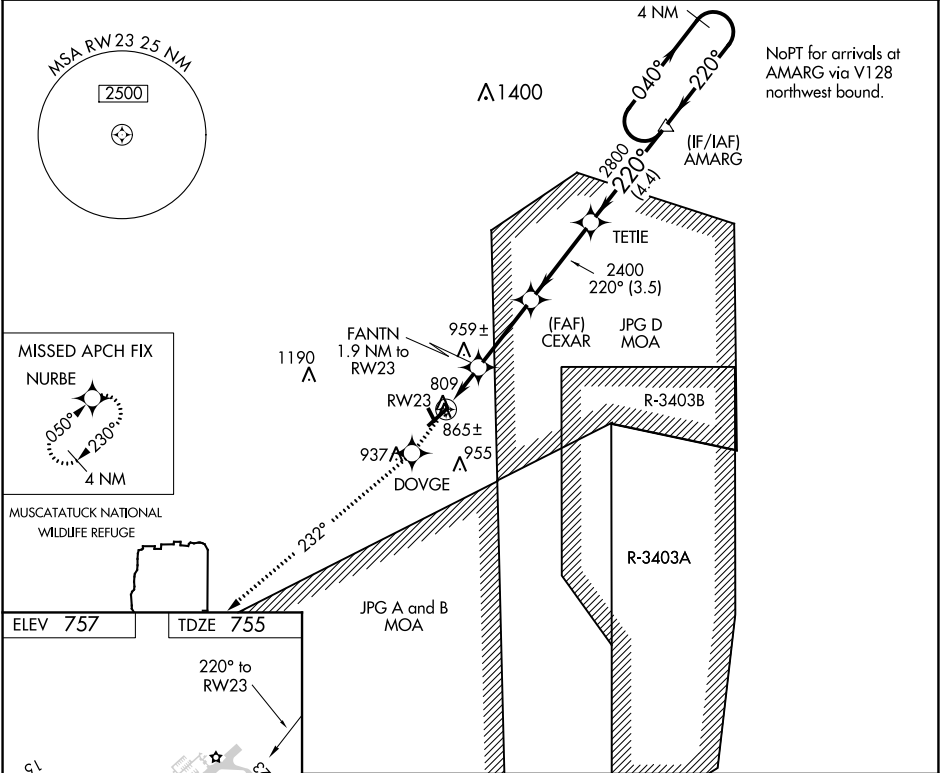
RNAV (GPS) Y RWY 23

NORTH VERNON (OVO)

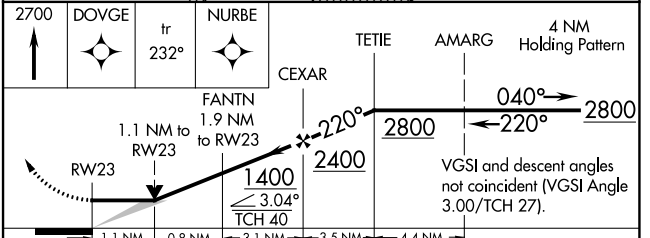
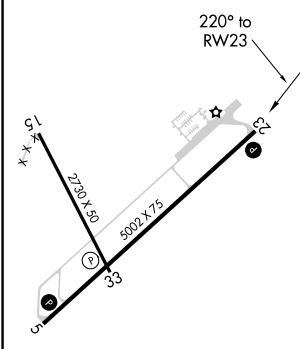
NA DME/DME RNP-0.3 NA. When local altimeter setting not received, use Shelbyville altimeter setting and increase all MDAs 100 feet, increase LNAV Cat C and Circling Cat C visibility ¼ SM. VDP NA when using Shelbyville altimeter setting.

MISSED APPROACH:
Climb to 2700 direct DOVGE and via track 232° to NURBE and hold.

AWOS-3 120.625	INDIANAPOLIS CENTER 124.775 269.45	UNICOM 122.7 (CTAF) 0
--------------------------	--	---------------------------------



ELEV 757	TDZE 755
----------	----------



CATEGORY	A	B	C	D
LNAV MDA	1120-1	365 (400-1)		NA
CIRCLING	1180-1 423 (500-1)	1300-1 543 (600-1)	1300-1½ 543 (600-1½)	NA

EC-2, 30 DEC 2021 to 27 JAN 2022

EC-2, 30 DEC 2021 to 27 JAN 2022