

NDB EOE 278	APP CRS 213°	Rwy ldg TDZE Apt Elev	4001 570 570
-----------------------	------------------------	-----------------------------	---

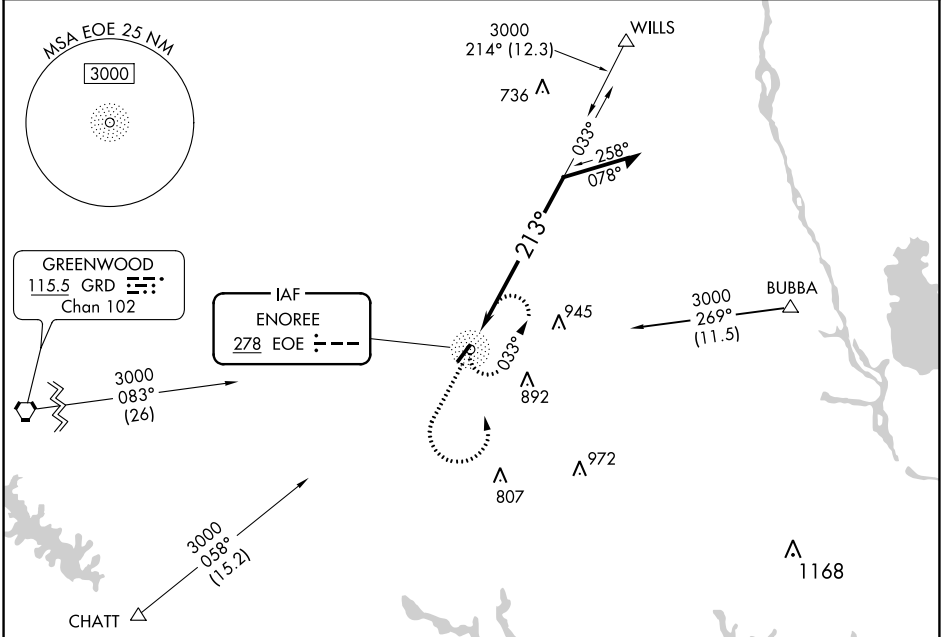
NDB RWY 22

NEWBERRY COUNTY (EOE)

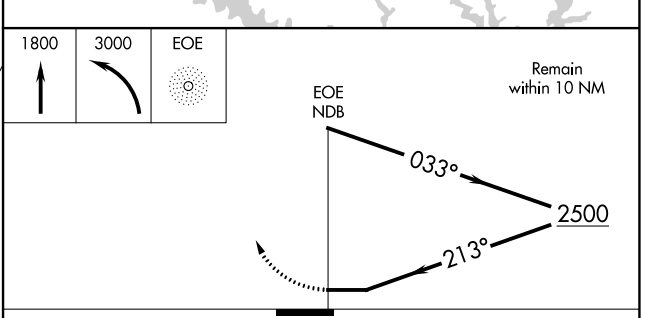
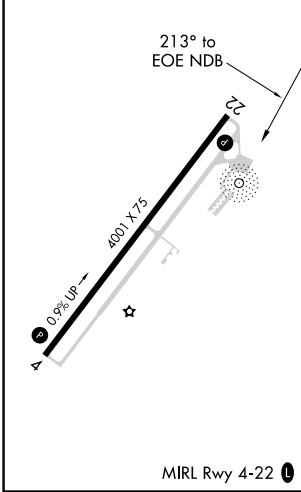
⚠ When local altimeter setting not received, use Greenwood County altimeter setting and increase all MDA 80 feet.
⚠ Helicopter visibility reduction below 3/4 SM NA.

MISSED APPROACH: Climb to 1800 then climbing left turn to 3000 direct EOE NDB and hold.

AWOS-3 124.275	COLUMBIA APP CON 133.4 285.6	UNICOM 122.8 (CTAF) Ⓛ
--------------------------	--	--



ELEV 570	TDZE 570
----------	----------



CATEGORY	A	B	C	D
S-22	1100-1	530 (600-1)	NA	
CIRCLING	1100-1	530 (600-1)	NA	

SE-2, 30 DEC 2021 to 27 JAN 2022

SE-2, 30 DEC 2021 to 27 JAN 2022