

WAAS CH <b>93901</b> <b>W36A</b>	APP CRS <b>001°</b>	Rwy Idg <b>6502</b> TDZE <b>296</b> Apt Elev <b>298</b>
--	------------------------	---

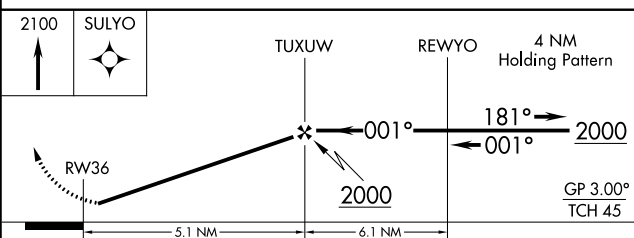
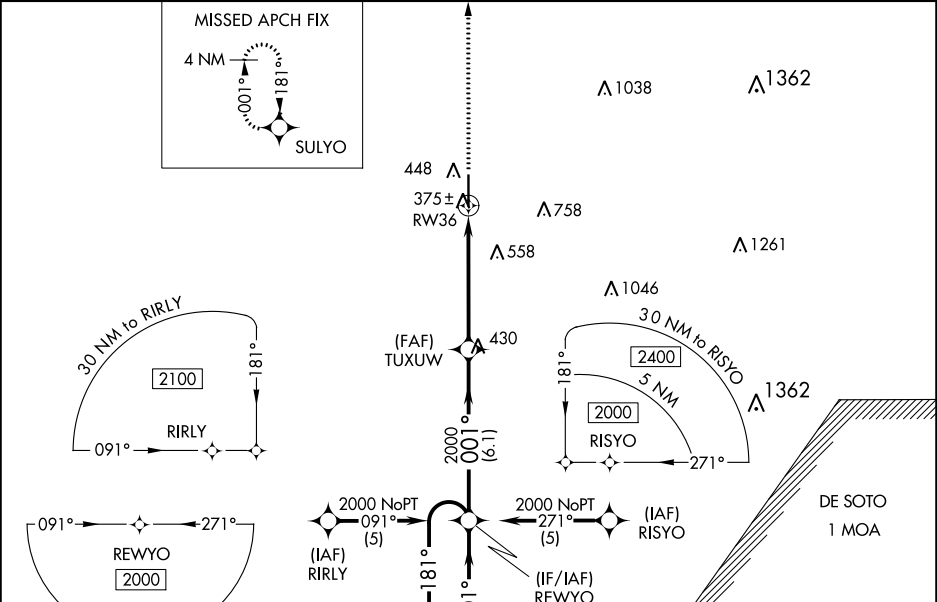
# RNAV (GPS) RWY 36

HATTIESBURG/LAUREL RGNL (PIB)

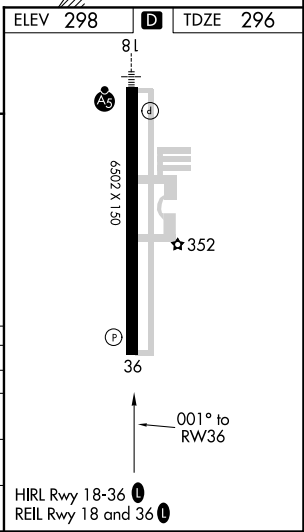
**▽** For uncompensated Baro-VNAV systems, LNAV/VNAV NA below -1.5°C (5°F) or above 48°C (118°F). DME/DME RNP-0.3 NA. Visibility reduction by helicopters NA. When local altimeter setting not received, use Hattiesburg Bobby L Chain Muni altimeter setting: increase LPV DA to 597 feet and LNAV/VNAV DA to 676; increase all MDA 60 feet and visibility LNAV Cat C/D and Circling Cat C/D ¼ SM. Baro-VNAV NA when using Hattiesburg Bobby L Chain Muni altimeter setting.

**▲** MISSED APPROACH: Climb to 2100 direct SULYO and hold.

AWOS-3PT <b>128.325</b>	HOUSTON CENTER <b>126.8 327.8</b>	UNICOM <b>123.0 (CTAF) 1</b>
----------------------------	--------------------------------------	---------------------------------



2100	SULYO	TUXUW	REWYO	4 NM Holding Pattern	
↑	✧	✧	✧	✧	
RW36		← 001°	← 001°	← 001°	
5.1 NM		6.1 NM		2000	
CATEGORY		A	B	C	D
LPV DA		546-1		250 (300-1)	
LNAV/VNAV DA		625-1¼		329 (400-1¼)	
LNAV MDA		680-1		384 (400-1)	
CIRCLING		760-1		462 (500-1)	
		1120-2½		822 (900-2½)	
		1120-2¾		822 (900-2¾)	



SC-4, 30 DEC 2021 to 27 JAN 2022

SC-4, 30 DEC 2021 to 27 JAN 2022