

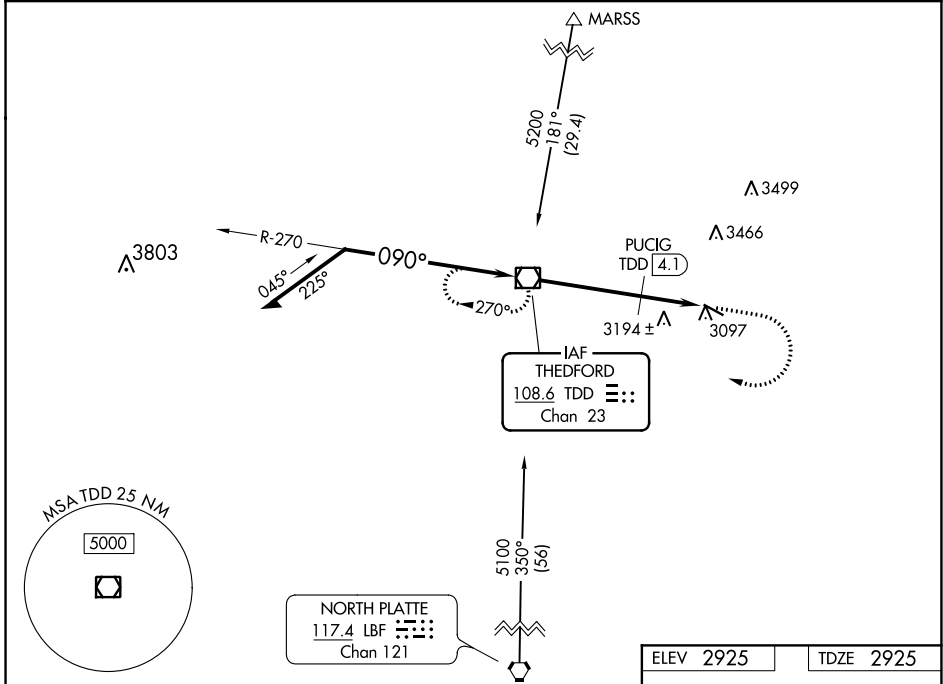
| | | | |
|---|------------------------|-----------------------------|---|
| VOR/DME TDD 108.6 Chan 23 | APP CRS 090° | Rwy Idg TDZE Apt Elev | 4400 2925 2925 |
|---|------------------------|-----------------------------|---|

VOR RWY 11
THOMAS COUNTY (TIF)

NA Visibility reduction by helicopters NA. When local altimeter setting not received, use North Platte altimeter setting and increase all MDA 140 feet, increase S-11 Cat B and Circling Cat B visibility 1/4 mile. VDP NA when using North Platte altimeter setting.

MISSED APPROACH: Climb to 4000 then climbing right turn to 5100 direct TDD VOR/DME and hold.

| | | |
|--------------------------|--------------------------------------|----------------------|
| AWOS-3 120.825 | DENVER CENTER 127.95 338.2 | CTAF 122.9 |
|--------------------------|--------------------------------------|----------------------|



NC-2, 30 DEC 2021 to 27 JAN 2022

NC-2, 30 DEC 2021 to 27 JAN 2022

| | | | |
|--|--------------|---------------|----------------|
| ELEV 2925 | | TDZE 2925 | |
| Remain within 10 NM | | TDD VOR/DME | |
| 5100 | 270° | 4000 | 5100 |
| 5100 | 090° | TDD | ☐ |
| *3780 when using North Platte altimeter setting. | 3.14° TCH 40 | PUCIG TDD 4.1 | |
| | 090° | TDD 4.8 | TDD 6.4 |
| | *3640 | | |
| | 4.1 NM | 0.7 | 1.6 NM |
| CATEGORY | A | B | D |
| S-11 | 3640-1 | 715 (800-1) | NA |
| CIRCLING | 3640-1 | 715 (800-1) | NA |
| PUCIG FIX MINIMUMS | | | |
| S-11 | 3500-1 | 575 (600-1) | NA |
| CIRCLING | 3500-1 | 575 (600-1) | NA |
| MIRL Rwy 11-29 | | | |
| FAF to MAP 6.4 NM | | | |
| Knots | 60 | 90 | 120 150 180 |
| Min:Sec | 6:30 | 4:20 | 3:15 2:36 2:10 |