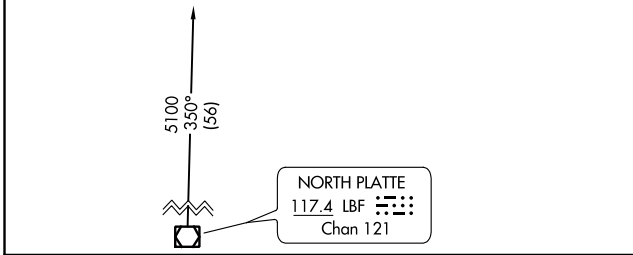
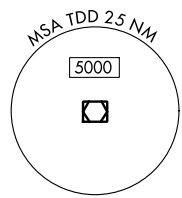
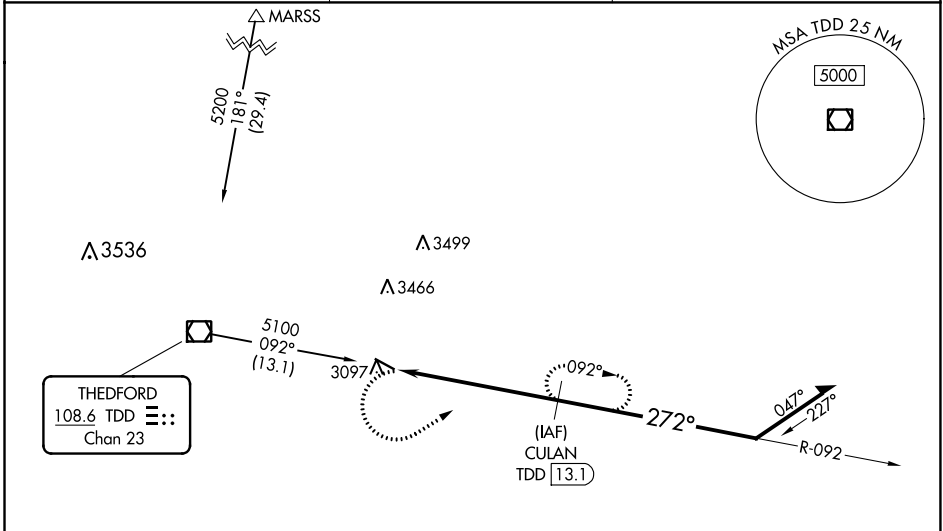


VOR/DME TDD 108.6 Chan 23	APP CRS 272°	Rwy Idg TDZE Apt Elev 4400 2920 2925
---	------------------------	--

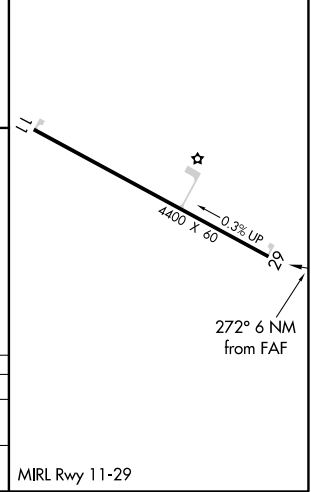
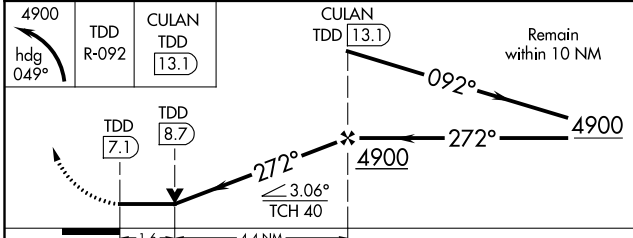
VOR RWY 29
THOMAS COUNTY (TIF')

DME required.	MISSED APPROACH: Climbing left turn to 4900 on heading 049° and TDD R-092 to CULAN/TDD 13.1 DME and hold.
---------------	---

AWOS-3 120.825	DENVER CENTER 127.95 338.2	CTAF 122.9
--------------------------	--------------------------------------	----------------------



ELEV 2925	TDZE 2920
-----------	-----------



CATEGORY	A	B	C	D
S-29	3480-1	560 (600-1)	NA	
CIRCLING	3480-1	555 (600-1)	NA	

NC-2, 30 DEC 2021 to 27 JAN 2022

NC-2, 30 DEC 2021 to 27 JAN 2022