

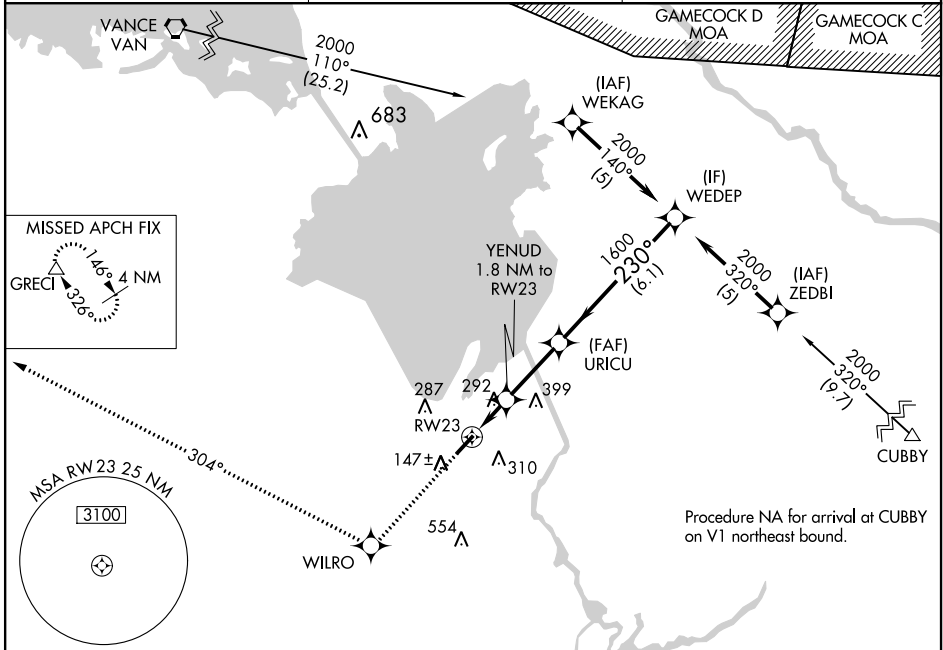
APP CRS 230°	Rwy Idg TDZE Apt Elev	5001 74 74
------------------------	-----------------------------	---------------------------------------

RNAV (GPS) RWY 23

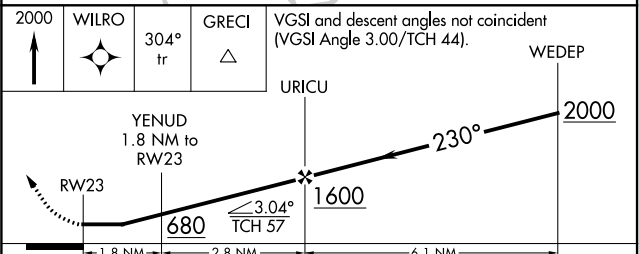
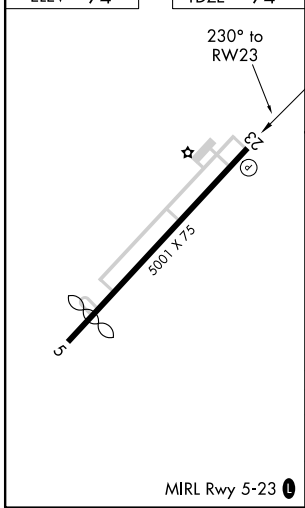
BERKELEY COUNTY (MKS)

RNP APCH-GPS	Procedure NA at night. Helicopter visibility reduction below 1 SM NA. When local altimeter setting not received, use Charleston AFB/Intl altimeter setting: increase all MDA 60 feet and increase LNAV Cat C/D and Circling Cat C/D visibility ¼ SM.	MISSED APPROACH: Climb to 2000 direct WILRO and via 304° track to GRECI and hold.
--------------	--	---

AWOS-3 119.175	CHARLESTON APP CON 119.3 379.925	UNICOM 123.05 (CTAF) 0
--------------------------	--	---



ELEV 74	TDZE 74
----------------	----------------



CATEGORY	A	B	C	D
LNAV MDA	560-1	486 (500-1)	560-1¼ 486 (500-1¼)	560-1½ 486 (500-1½)
CIRCLING	580-1 506 (600-1)	620-1 546 (600-1)	700-1¾ 626 (700-1¾)	860-2½ 786 (800-2½)

SE-2, 30 DEC 2021 to 27 JAN 2022

SE-2, 30 DEC 2021 to 27 JAN 2022