

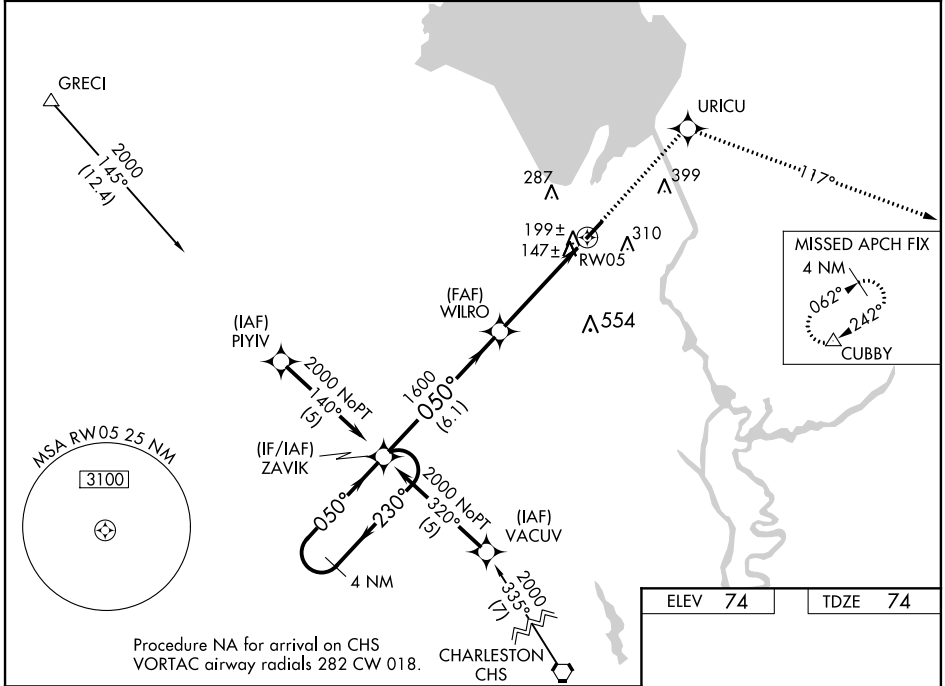
WAAS CH <b>63210</b> <b>W05A</b>	APP CRS <b>050°</b>	Rwy Idg TDZE <b>74</b> Apt Elev <b>74</b>	<b>4351</b>
--	------------------------	---	-------------

# RNAV (GPS) RWY 5

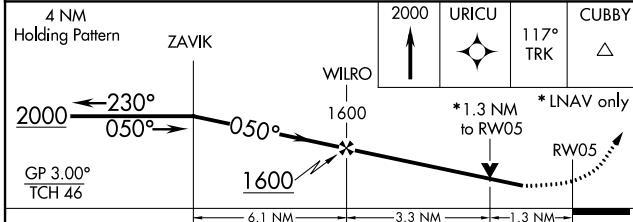
BERKELEY COUNTY (MKS)

RNP APCH-GPS.	<p><b>NA</b> Circling to Rwy 23 NA at night. Baro-VNAV NA when using Charleston AFB/Intl altimeter setting. For uncompensated Baro-VNAV systems, LNAV/VNAV NA below -15° C or above 54° C. Visibility reduction by helicopters NA. When local altimeter setting not received, use Charleston AFB/Intl altimeter setting: increase LPV DA to 451 feet; LNAV/VNAV DA to 513 feet; increase all MDA 60 feet and increase LNAV Cat C and Circling Cat C/D visibility ¼ SM. VDP NA when using Charleston AFB/Intl altimeter setting.</p>	<p><b>MISSED APPROACH:</b> Climb to 2000 direct URICU and via 117° track to CUBBY and hold.</p>
---------------	---	---

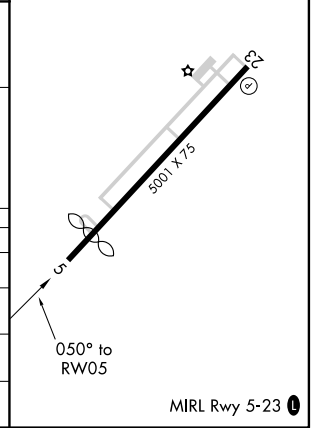
AWOS-3 <b>119.175</b>	CHARLESTON APP CON <b>119.3 379.925</b>	UNICOM <b>123.05 (CTAF) 0</b>
--------------------------	--	----------------------------------



ELEV 74	TDZE 74
---------	---------



CATEGORY	A	B	C	D
LPV DA		407-1¼	333 (400-1¼)	
LNAV/VNAV DA		469-1½	395 (400-1½)	
LNAV MDA	520-1	446 (500-1)	520-1¼ 446 (500-1¼)	520-1½ 446 (500-1½)
CIRCLING	580-1 506 (600-1)	620-1 546 (600-1)	700-1¾ 626 (700-1¾)	860-2½ 786 (800-2½)



SE-2, 30 DEC 2021 to 27 JAN 2022

SE-2, 30 DEC 2021 to 27 JAN 2022