

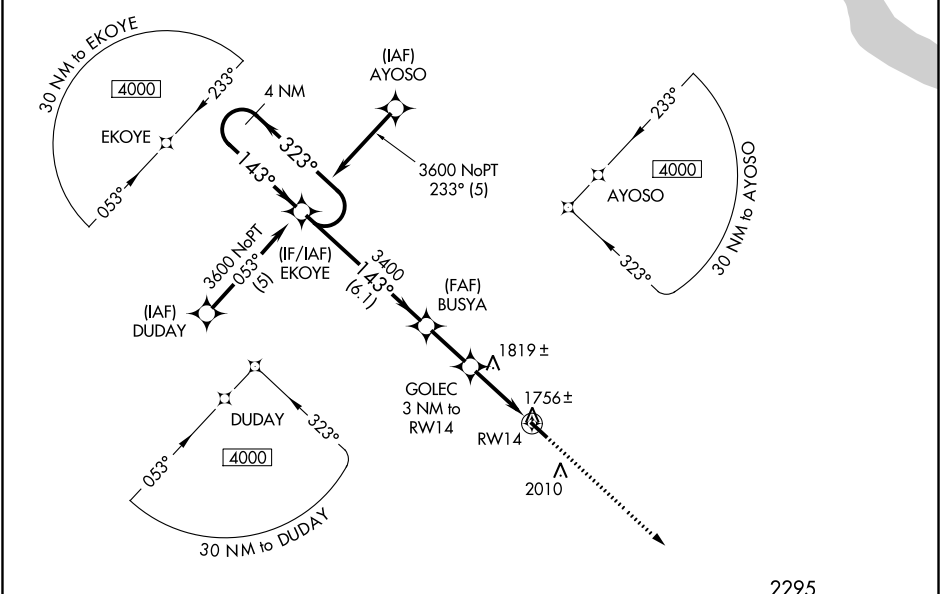
WAAS CH <b>66019</b> <b>W14A</b>	APP CRS <b>143°</b>	Rwy Idg TDZE Apt Elev	<b>4101</b> <b>1746</b> <b>1766</b>
--	------------------------	-----------------------------	---

# RNAV (GPS) RWY 14

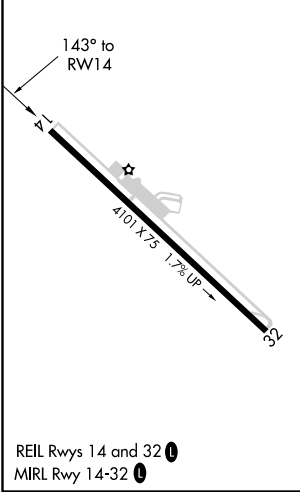
CORRY-LAWRENCE (8G2)

RNP APCH.	MISSED APPROACH: Climb to 3600 direct CUXOM and hold.
▽ Baro-VNAV NA. Rwy 14 helicopter visibility reduction below ¼ SM NA. ▲ NA Use Jamestown NY altimeter setting; when not received, use Meadville altimeter setting and increase all DA 65 feet and all MDA 80 feet; increase LPV all Cats and LNAV Cat C visibility ¼ SM.	

JHW AWOS-3PT <b>118.425</b>	BUFFALO APP CON * <b>121.0 257.8</b>	UNICOM <b>122.8 (CTAF) 0</b>
--------------------------------	---	---------------------------------



ELEV 1766	TDZE 1746
-----------	-----------



4 NM Holding Pattern EKOYE		*LNAV only	3600	CUXOM
GP 3.00° TCH 40		3600 ← 323°	↑	✧
		→ 143°		
		3400		
		→ 143°		
		3400		
		*2700		
		→ 143°		
		3 NM		
CATEGORY	A	B	C	D
LPV DA	2054-1¼	308 (300-1¼)		NA
LNAV/VNAV DA	2084-1½	338 (400-1½)		NA
LNAV MDA	2140-1	394 (400-1)		NA

NE-4, 30 DEC 2021 to 27 JAN 2022

NE-4, 30 DEC 2021 to 27 JAN 2022