

MEADE, KANSAS

AL-6286 (FAA)

21280

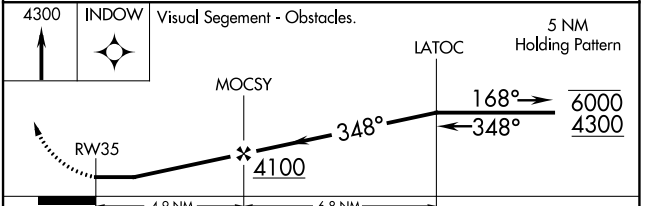
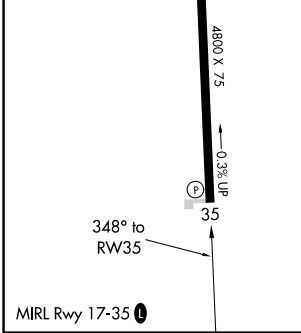
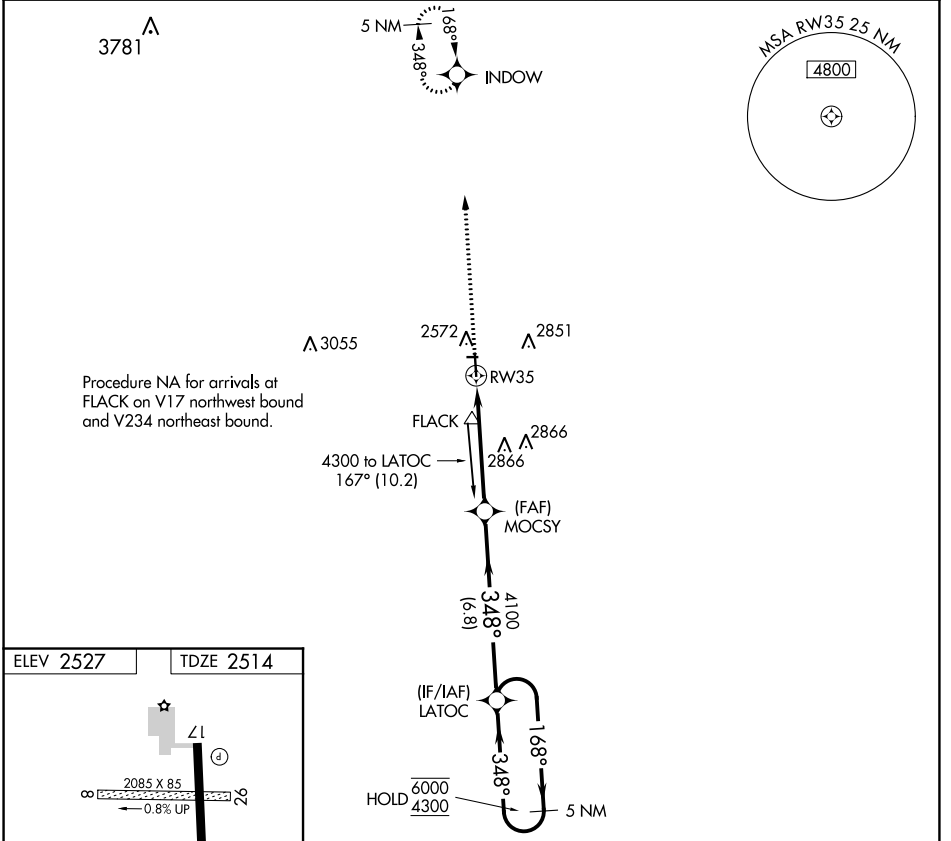
APP CRS	Rwy Idg	<b>4800</b>
<b>348°</b>	TDZE	<b>2514</b>
	Apt Elev	<b>2527</b>

# RNAV (GPS) RWY 35

MEADE MUNI (MEJ)

RNP APCH	MISSED APPROACH: Climb to 4300 direct INDOW and hold.
<p>⚠ Circling NA to Rws 8 and 26. Rwy 35 helicopter visibility reduction below 1 SM NA. When local altimeter setting not received, use Liberal altimeter setting and increase all MDAs 140 feet.</p>	

AWOS-3PT <b>119.425</b>	KANSAS CITY CENTER <b>134.0 257.625</b>	UNICOM <b>122.8 (CTAF) 0</b>
----------------------------	--	---------------------------------



CATEGORY	A	B	C	D
LNAV MDA	3000-1	486 (500-1)	NA	
CIRCLING	3000-1 473 (500-1)	3160-1 633 (700-1)	NA	

MEADE, KANSAS  
Orig-D 20MAY21

37°17'N-100°21'W

# MEADE MUNI (MEJ) RNAV (GPS) RWY 35

NC-2, 30 DEC 2021 to 27 JAN 2022

NC-2, 30 DEC 2021 to 27 JAN 2022