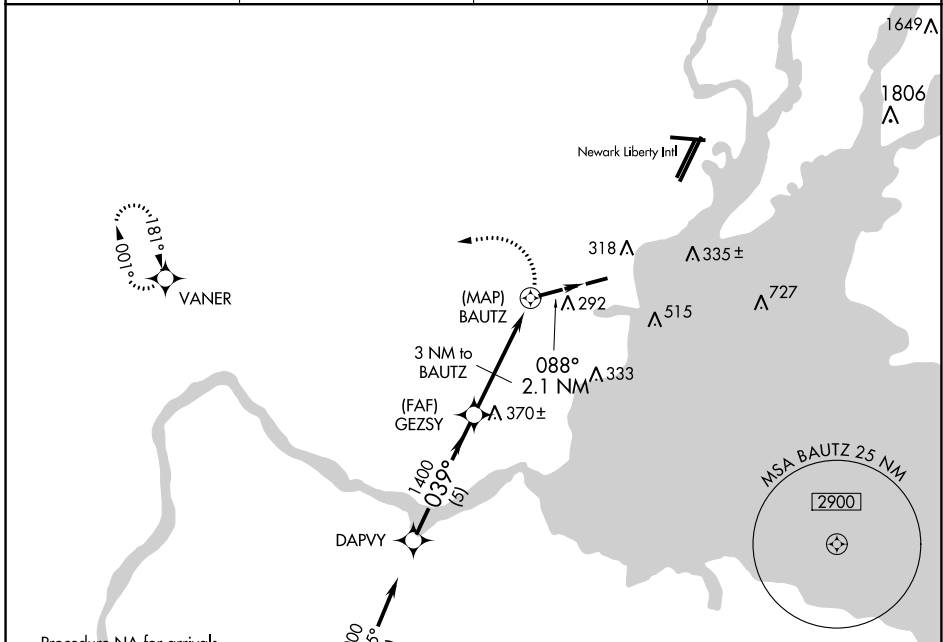


APP CRS 039°	Rwy Idg TDZE Apt Elev	N/A N/A 22
------------------------	-----------------------------	---------------------------------------

GPS-A
LINDEN (LDJ)

RNP APCH - GPS	When local altimeter setting not received, use Newark Liberty Intl altimeter setting. Helicopter visibility reduction below 1 SM NA. Procedure NA at night.	MISSED APPROACH: Climbing left turn to 2000 direct VANER WP and hold.
----------------	---	---

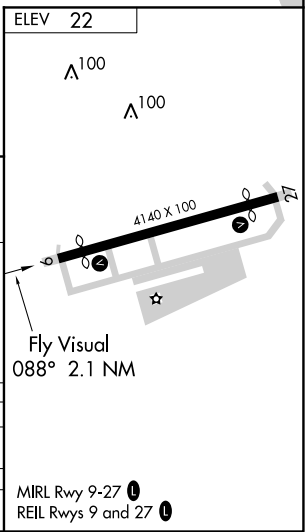
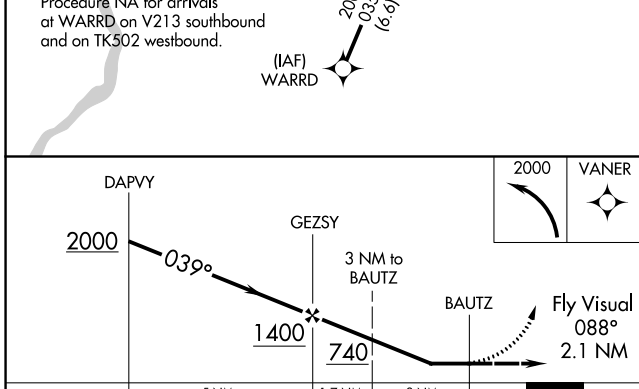
AWOS-3 124.025	NEW YORK APP CON 135.35 379.9	CLNC DEL 127.25	UNICOM 123.0 (CTAF)
--------------------------	---	---------------------------	-------------------------------



Procedure NA for arrivals at WARRD on V213 southbound and on TK502 westbound.

NE-2, 30 DEC 2021 to 27 JAN 2022

NE-2, 30 DEC 2021 to 27 JAN 2022



CATEGORY	A	B	C	D
CIRCLING	620-2½	598 (600-2½)	880-2½ 858 (900-2½)	NA
NEWARK ALTIMETER SETTING MINIMUMS				
CIRCLING	640-2½	618 (700-2½)	900-2½ 878 (900-2½)	NA