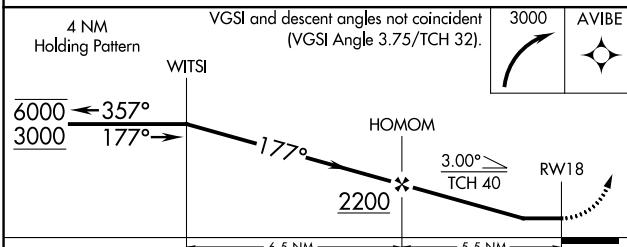
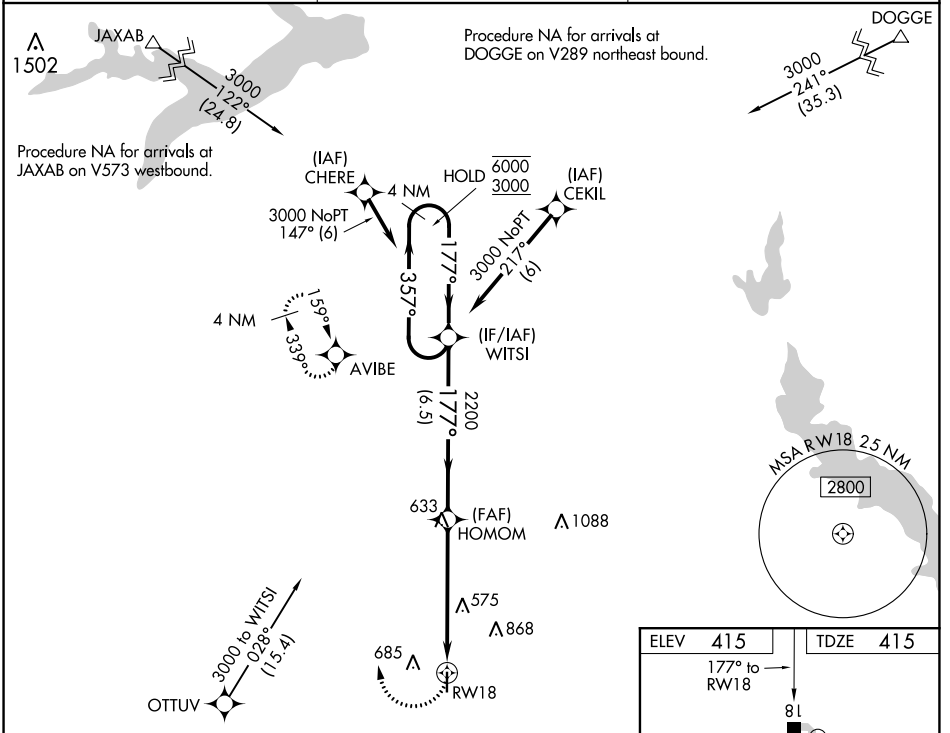


WAAS CH <b>60935</b> <b>W18A</b>	APP CRS <b>177°</b>	Rwy Idg TDZE Apt Elev	<b>3998</b> <b>415</b> <b>415</b>
--	------------------------	-----------------------------	---

**RNAV (GPS) RWY 18**  
FOX STEPHENS FLD-GILMER MUNI (JXI)

RNP APCH.  
 Procedure NA at night. Rwy 18 helicopter visibility reduction below 1 SM NA. When local altimeter setting not received, use Longview altimeter setting and increase all MDA 60 feet and increase LP, LNAV, and Circling Cat C visibility 1/4 SM.  
 MISSED APPROACH: Climbing right turn to 3000 direct AVIBE and hold.

AWOS-3 <b>118.2</b>	LONGVIEW APP CON * <b>124.275 257.975</b>	CTAF <b>122.9</b>
------------------------	--	----------------------



ELEV <b>415</b>	TDZE <b>415</b>
177° to RWY 18	
81	
3998 x 60	
36	

MRL Rwy 18-36

CATEGORY	A	B	C	D
LP MDA	820-1	405 (500-1)	820-1 <sup>1</sup> / <sub>8</sub> 405 (500-1 <sup>1</sup> / <sub>8</sub> )	NA
LNAV MDA	880-1	465 (500-1)	880-1 <sup>3</sup> / <sub>8</sub> 465 (500-1 <sup>3</sup> / <sub>8</sub> )	NA
<b>C</b> CIRCLING	1000-1 585 (600-1)	1060-1 645 (700-1)	1180-2 <sup>1</sup> / <sub>4</sub> 765 (800-2 <sup>1</sup> / <sub>4</sub> )	NA

SC-2, 30 DEC 2021 to 27 JAN 2022

SC-2, 30 DEC 2021 to 27 JAN 2022