

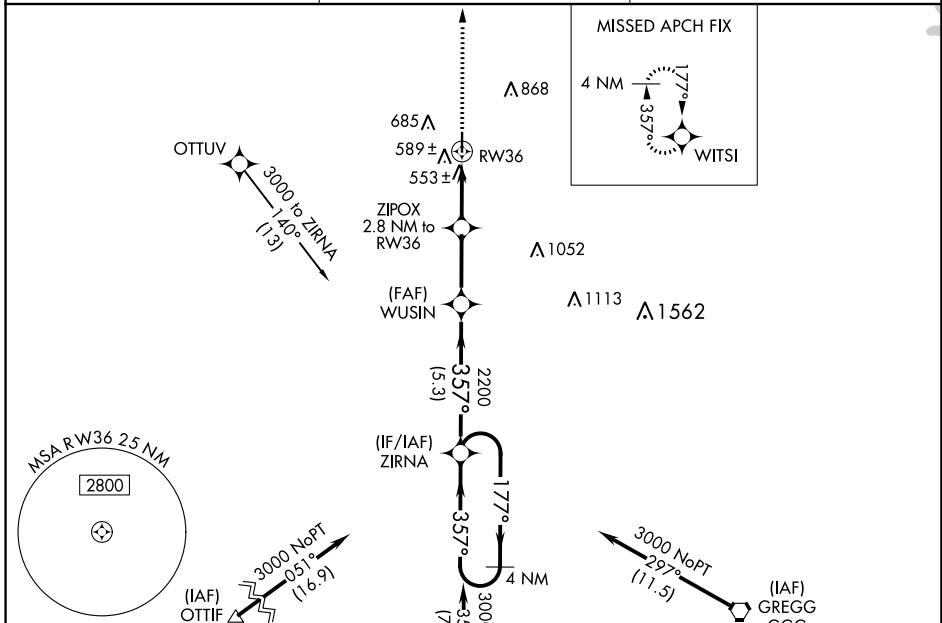
WAAS CH <b>65635</b> <b>W36A</b>	APP CRS <b>357°</b>	Rwy Idg TDZE <b>415</b> Apt Elev <b>415</b>	<b>3998</b>
--	------------------------	---	-------------

# RNAV (GPS) RWY 36

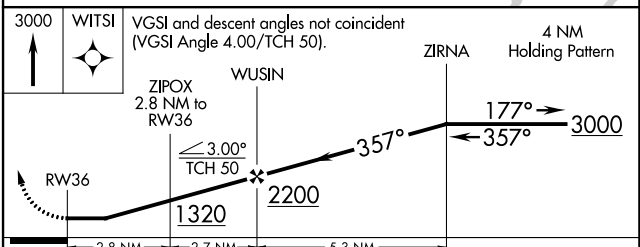
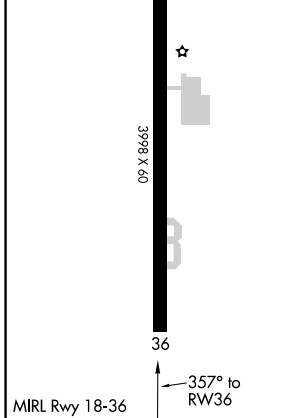
FOX STEPHENS FLD-GILMER MUNI (JXI)

RNP APCH.	When local altimeter setting not received, use Longview altimeter setting and increase all MDA 60 feet and all Cat C visibilities ¼ mile. Rwy 36 helicopter visibility reduction below 1 SM NA. Procedure NA at night.	MISSED APPROACH: Climb to 3000 direct WITSI and hold.
-----------	--	--

AWOS-3 <b>118.2</b>	LONGVIEW APP CON * <b>124.275 257.975</b>	CTAF <b>122.9</b>
------------------------	--	----------------------



ELEV 415	TDZE 415
----------	----------



CATEGORY	A	B	C	D
LP MDA	820-1	405 (500-1)	820-1 1/8 405 (500-1 1/8)	NA
LNAV MDA	840-1	425 (500-1)	840-1 1/4 425 (500-1 1/4)	NA
CIRCLING	1000-1 585 (600-1)	1060-1 645 (700-1)	1180-2 1/4 765 (800-2 1/4)	NA

SC-2, 30 DEC 2021 to 27 JAN 2022

SC-2, 30 DEC 2021 to 27 JAN 2022