

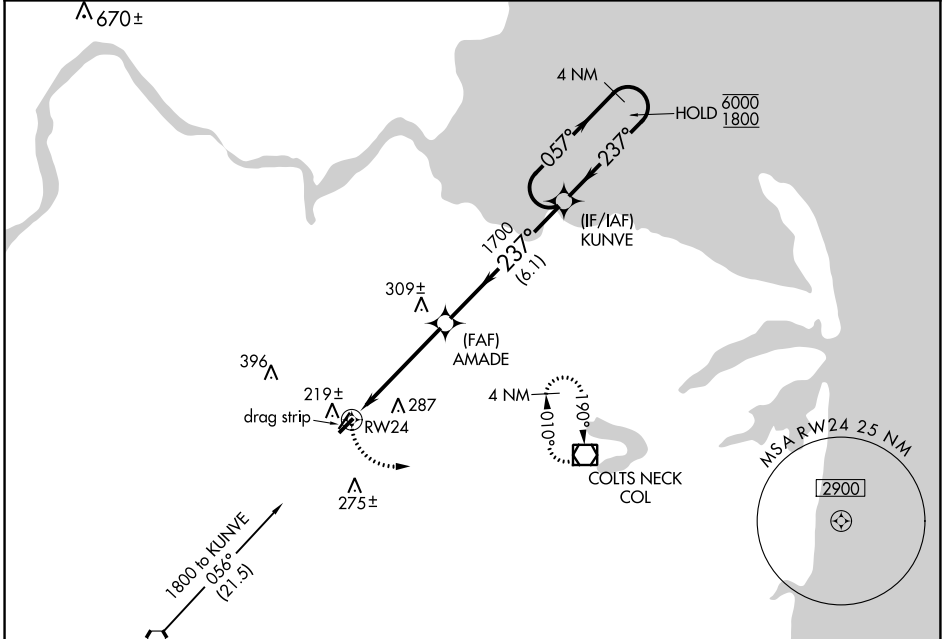
APP CRS	Rwy Idg	3194
237°	TDZE	87
	Apt Elev	87

RNAV (GPS) RWY 24

OLD BRIDGE (3N6)

RNP APCH.		MISSED APPROACH: Climbing left turn to 2000 direct COL VOR/DME and hold.
∇	Procedure NA at night. Rwy 24 helicopter visibility reduction below 1 SM NA.	
▲ NA	Use Belmar/Farmingdale altimeter setting; when not received, use Wrightstown altimeter setting and increase all MDA 20 feet.	

BLM AWOS-3PT 121.625	MC GUIRE APP CON 126.475 363.8	GCO 121.725	UNICOM 123.075 (CTAF)
--------------------------------	--	-----------------------	---------------------------------

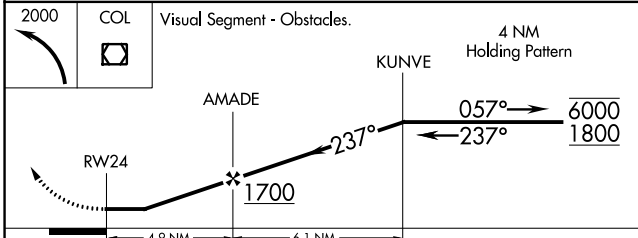


NE-2, 30 DEC 2021 to 27 JAN 2022

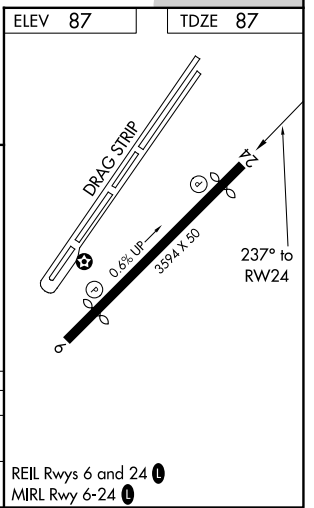
NE-2, 30 DEC 2021 to 27 JAN 2022

ELEV 87	TDZE 87
---------	---------

2000 COL Visual Segment - Obstacles.



CATEGORY	A	B	C	D
LNAV MDA	620-1	533 (600-1)	NA	
CIRCLING	620-1	533 (600-1)	NA	



REIL Rwy 6 and 24
MIRL Rwy 6-24