

WAAS CH 87024 W08A	APP CRS 083°	Rwy Idg 3297 TDZE 879 Apt Elev 881
--	------------------------	---

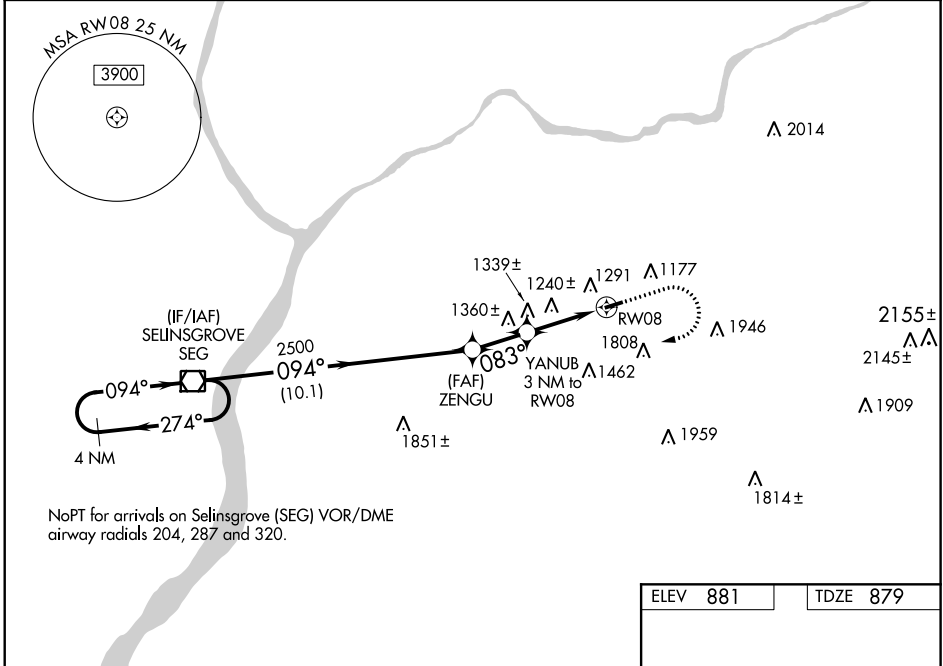
RNAV (GPS) RWY 8

NORTHUMBERLAND COUNTY (N79)

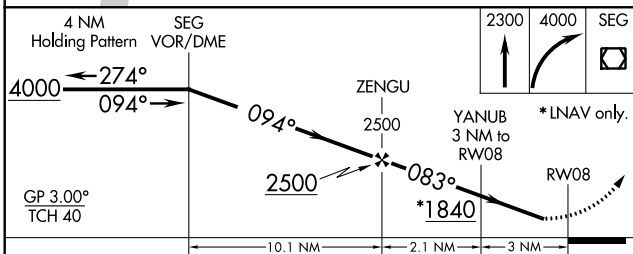
NA Baro-VNAV NA when using Selinsgrove altimeter setting. For uncompensated Baro-VNAV systems, LNAV/VNAV NA below -1.6°C (4°F) or above 54°C (130°F). Helicopter visibility reduction below 1 SM NA. DME/DME RNP-0.3 NA. Procedure NA at night. When local altimeter setting not received, use Selinsgrove altimeter setting, and increase all DA 94 feet and all MDA 100 feet, increase LPV all Cats visibility ¼ SM; LNAV/VNAV all Cats visibility ½ SM; and LNAV Cat C visibility ½ SM.

MISSED APPROACH:
Climb to 2300 then climbing right turn to 4000 direct SEG VOR/DME and hold.

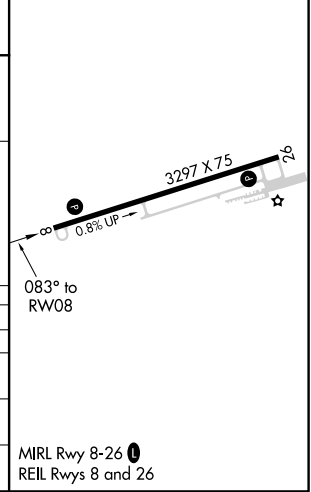
AWOS-3 119.175	HARRISBURG APP CON 118.25 269.45	UNICOM 122.8 (CTAF)	121.8 0
--------------------------	--	-------------------------------	----------------



ELEV 881	TDZE 879
----------	----------



CATEGORY	A	B	C	D
LPV DA	1146-1	267 (300-1)		NA
LNAV/VNAV DA	1603-2½	724 (800-2½)		NA
LNAV MDA	1620-1 741 (800-1)	1620-1¼ 741 (800-1¼)	1620-2½ 741 (800-2½)	NA
CIRCLING	1820-1¼ 939 (1000-1¼)	1880-1½ 999 (1000-1½)	2120-3 1239 (1300-3)	NA



NE-4, 30 DEC 2021 to 27 JAN 2022

NE-4, 30 DEC 2021 to 27 JAN 2022