

WAAS CH 50416 W02A	APP CRS 020°	Rwy Idg 6100 TDZE 3786 Apt Elev 3788
----------------------------------------	------------------------	-----------------------------------------------------------------

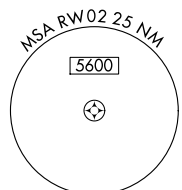
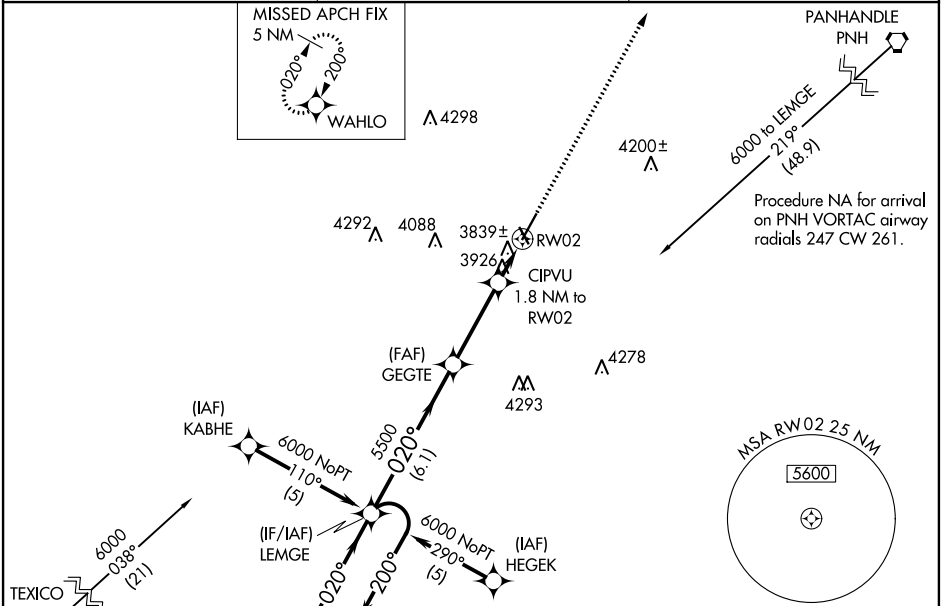
RNAV (GPS) RWY 2

HEREFORD MUNI (HR.X)

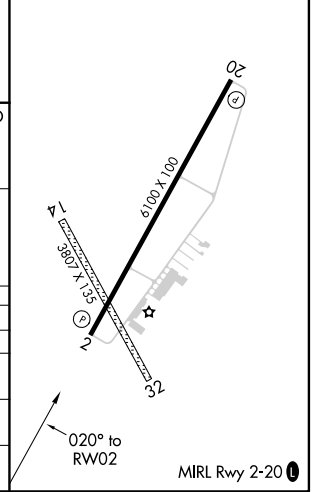
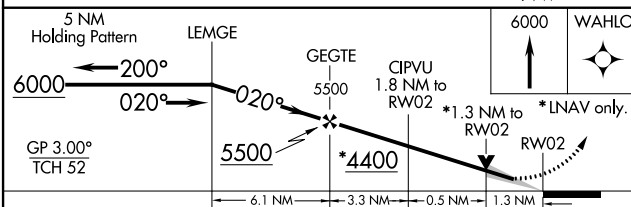
▼ For uncompensated Baro-VNAV systems, LNAV/VNAV NA below -22°C (-7°F) or above 41°C (105°F).
 ▲ DME/DME RNP-0.3 NA. When local altimeter setting not received, use Rick Husband Amarillo Intl altimeter setting: Increase LPV DA to 4098 feet and all Cats visibility ¼ SM, increase LNAV/VNAV DA to 4238 feet and all Cats visibility ¼ SM, increase all MDA 120 feet; increase LNAV Cats C/D visibility ¼ SM, increase Circling Cat C visibility ½ SM and Cat D visibility ¼ SM. Baro-VNAV NA when using Rick Husband Amarillo Intl altimeter setting. VDP NA with Rick Husband Amarillo Intl altimeter setting.

MISSED APPROACH:
Climb to 6000 direct WAHLO and hold.

AWOS-3 118.05	AMARILLO APP CON * 119.5 307.0	UNICOM 122.8 (CTAF) 0
-------------------------	------------------------------------------	---------------------------------



ELEV 3788	TDZE 3786
-----------	-----------



CATEGORY	A	B	C	D
LPV DA	3986-3/4 200 (200-3/4)			
LNAV/DA VNAV	4126-1 1/4 340 (400-1 1/4)			
LNAV MDA	4240-1	454 (500-1)	4240-1 1/4 454 (500-1 1/4)	4240-1 1/2 454 (500-1 1/2)
CIRCLING	4280-1	492 (500-1)	4440-1 3/4 652 (700-1 3/4)	4620-2 3/4 832 (900-2 3/4)

SC-2, 30 DEC 2021 to 27 JAN 2022

SC-2, 30 DEC 2021 to 27 JAN 2022